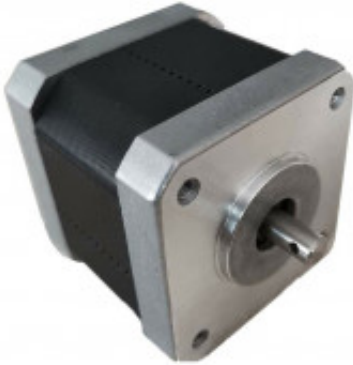


# 40mm Nema17 Stepper Motor 42 motor 42BYGH

**Produktkode:** 675aa

**Tilgjengelighet:** 2

**Ring/SMS etter pris:** 91166668



## Short Description

40mm Nema17 Stepper Motor 42 motor 42BYGH 0.8A motor 4-lead for 3D printer CNC

## Beskrivelse

4-lead Nema17 Stepper Motor 42 motor Nema 17 motor 0.8A 3D printer motor and CNC

General Specification:

Step angle accuracy: + - 5% (full step, not load)

Resistance accuracy: + - 10%

Inductance accuracy: + - 20%

Temperature rise: 80deg Max (rated current, 2 phase on)

Ambient temperature -----20deg ~+50deg

Insulation resistance: 100M? Min, 500VDC

Insulation Strength-----500VAC for one minute

## Item specifics

Condition: New: A brand-new, unused, unopened, undamaged item in its original packaging (where packaging is ... [Read more](#))

Full Load Amps: 0.8A

MPN: Does Not Apply

Full Step Angle: 1.8° (200 Steps)

Holding Torque: 30 N.CM

Brand: Unbranded

Size: 42\*42\*42

wire length:: 32mm

UPC: Does not apply

Model: 42 stepping motor

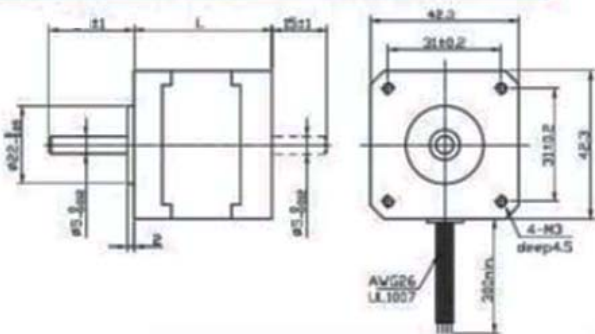
Country/Region of Manufacture: China

**电机规格 ( Electrical Specification ) :**

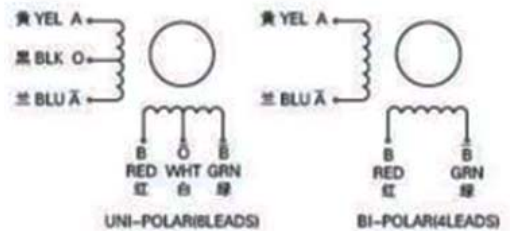
型号 Series Model	步距角 Step Angle (°)	机身长 Motor Length (mm)	电流 Rated Current (A)	电阻 Phase Resistance (Ω)	电感 Phase Inductance (mH)	静力矩 Holding Torque (N.cm Min)	定位力矩 Detent Torque (N.cm Max)	转动惯量 Rotor Inertia (g.cm <sup>2</sup> )	引线数 Lead Wire (No.)	重量 Motor Weight (g)
42BYG1006	1.8	28	0.6	8	10	12	1.6	34	4	150
42BYG1213	1.8	33	1.2	2.0	0.6	25	1.6	34	4	220
42BYG1205	1.8	33	0.5	24	19	21	1.6	34	4	220
42BYG1605	1.8	34	0.5	30	35	21	1.6	34	4	220
42BYG1605-6	1.8	34	0.5	20	16	20	1.6	34	6	220
42BYG1617	1.8	34	1.7	1.9	2.5	28	1.6	34	4	220
42BYG1612	1.8	34	1.2	2.3	3.8	28	2.2	54	4	280
42BYG2205	1.8	40	0.5	30	44	28	2.2	54	4	280
42BYG2208	1.8	40	0.8	7.2	4	30	2.2	54	4	280
42BYG2215	1.8	40	1.5	2	40	38	2.2	54	4	280
42BYG2210	1.8	40	1.0	7.2	7.3	30	2.2	54	6	350
42BYG3005	1.8	48	0.5	30	20	40	2.6	68	4	350
42BYG3023	1.8	48	2.3	1	1.8	50	2.6	68	4	350
42BYG3018	1.8	48	1.8	1.7	3.2	50	2.6	68	4	350
42BYG4218	1.8	60	1.8	2.2	5.0	65	2.8	102	4	500

\*以上仅为代表性产品，派生产品可根据客户要求制作  
 \*Note: We can manufacture products according to customer's requirements.

**外型图 ( Mechanical Dimensions ) : unit=mm**



**接线图 ( Wiring Diagram ) :**



**Product Gallery**

