

Mateksys F405-std



Produktkode: 733aa

Tilgjengelighet: 1

Lager : S125a

Ring/SMS etter pris: 91166668

Short Description

Mateksys F405-std

Beskrivelse

<https://www.mateksys.com/?portfolio=f405-std#tab-id-1>

<https://ardupilot.org/copter/docs/common-matekf405.html>

Highlights

3 x LEDs for FC STATUS (Blue, Red) and 3.3V indicator(Red)

6 x PWM / DShot outputs without conflict

2 x 2812LED outputs option

5 x UARTs

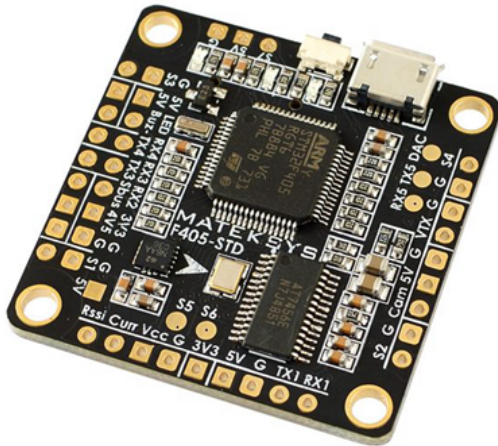
1 x Group of 5V/G/S1/S2/S3/S4 pads for 4in1 ESC Signal/GND

4 x pairs of corner pads for ESC Signal/GND connections (DSHOT compatible)

1 x pair I2C1 pads

1 x Side-press button for BOOT(DFU) mode

1 x 16pin bottom mounted FFC Slot for FCHUB-6S, FCHUB-VTX or FCHUB-W connection



MATEKSYS Flight Controller F405-STD

- * 168MHz STM32F405RGT6
- * 6-Axis ICM20602
- * BetaFlight OSD
- * BMP280 Barometer
- * MicroSD BlackBox
- * VCP & 5x UARTS
- * 6 PWM/DSHOT outputs
- * I2C1 & DAC

- * MATEKF405 Target

Specification

General	<p>Brand: Matek System Item No.: F405-STD MCU: 168MHz STM32F405RGT6 IMU: 32K ICM20602 gyro/accelerometer (SPI) Baro: BMP280 (I2C) OSD: BetaFlight OSD w/ AT7456E chip Blackbox: MicroSD card slot (SD/SDHC) VCP, UART1, UART2, UART3, UART4, UART5 Built in inverter for SBUS input (UART2-RX) PPM/UART Shared: UART2-RX SoftSerial on TX2, S5 or S6 optional Camera control on S6 or DAC optional Smartaudio & Tramp VTX protocol supported Battery Voltage Sensor: 1:10 Current Sensor: No (FCHUB-6S, FCHUB-VTX, FCHUB-W option) BEC 5V: No (FCHUB-6S, FCHUB-VTX, FCHUB-W option) LDO 3.3V: Max.300mA I2C1 SDA & SCL: Yes WS2812 Led Strip : Yes</p>
----------------	--

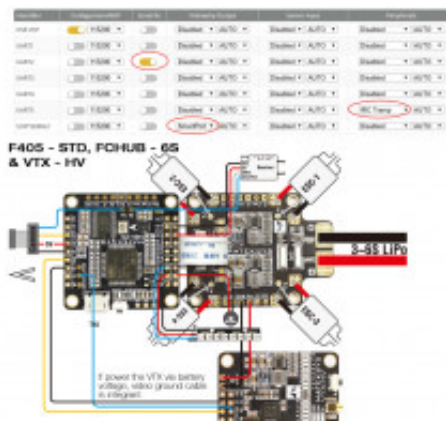
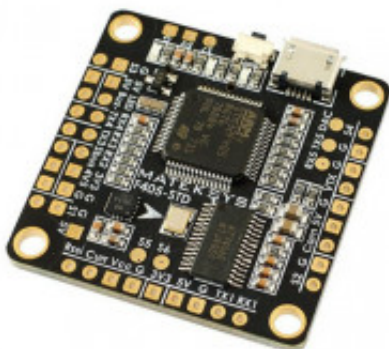
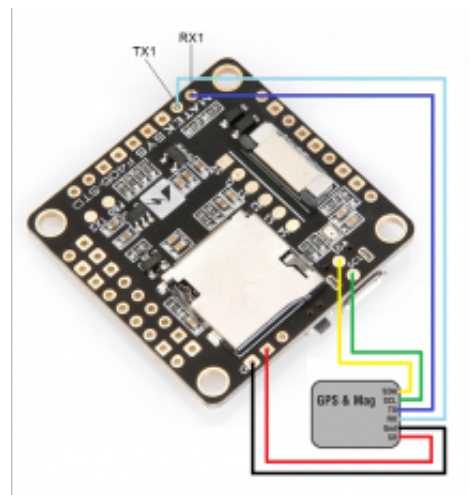
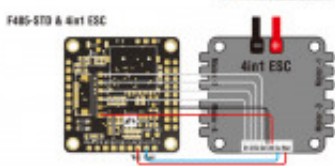
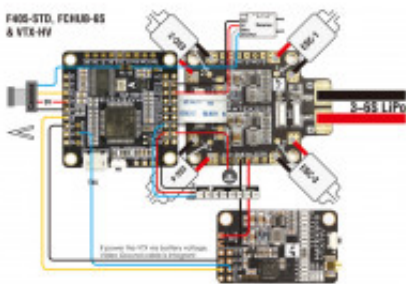
	Beeper : Yes RSSI: Yes 36x36mm PCB with 30.5mm mounting holes
Package Contents	1 x Flight Controller 2 x 0.5mm*16Pin 5cm Flexible Flat Cable 4 x M3 Anti-vibration Standoffs

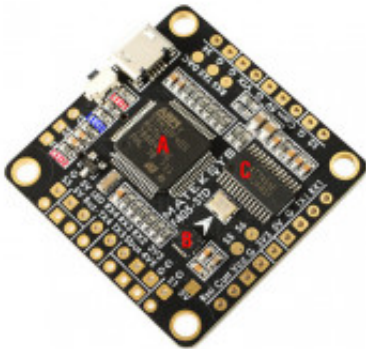
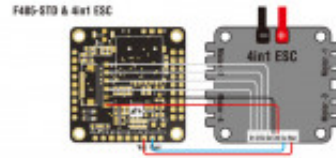
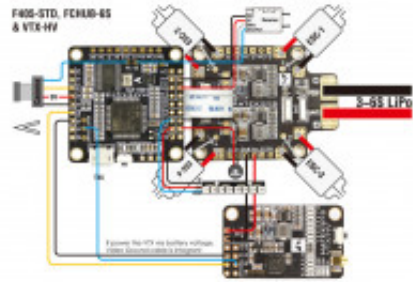
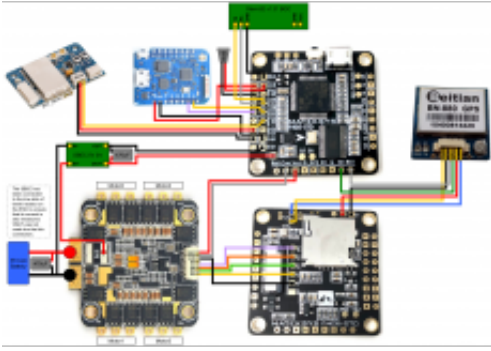
Customer Photos

Configuration

<https://www.youtube.com/watch?v=DJipfp28rUc>

Product Gallery





MATEKSYS Flight Controller F405-STD

- * 168MHz STM32F405RGT6
- * 8-Axis IMU/MPU6050
- * Built-in OSD
- * Built-in 280 Sgrammeter
- * MicroSD BlackBox
- * VCP & S-UART
- * 4 POWERDISH output
- * DC1 & DAC
- * MATEKSYS Target