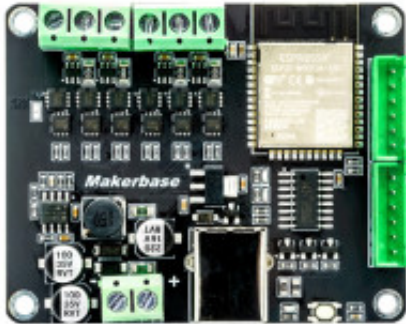


# ESP32 DUAL SimpleFOC Shield



**Produktkode:** 827aa

**Tilgjengelighet:** Opp til 1 mnd leveringstid

**Lager :** P42

**Pris:** kr. 380,00

## Short Description

Makerbase ESP32 DUAL SimpleFOC Shield For BLDC Brushless Servo Foc Dual-Motor Controller High Power

## Beskrivelse

Examples in youtube:

<https://www.youtube.com/channel/UC2i5I1tcOXRJ2ZJiRxwpCUQ>

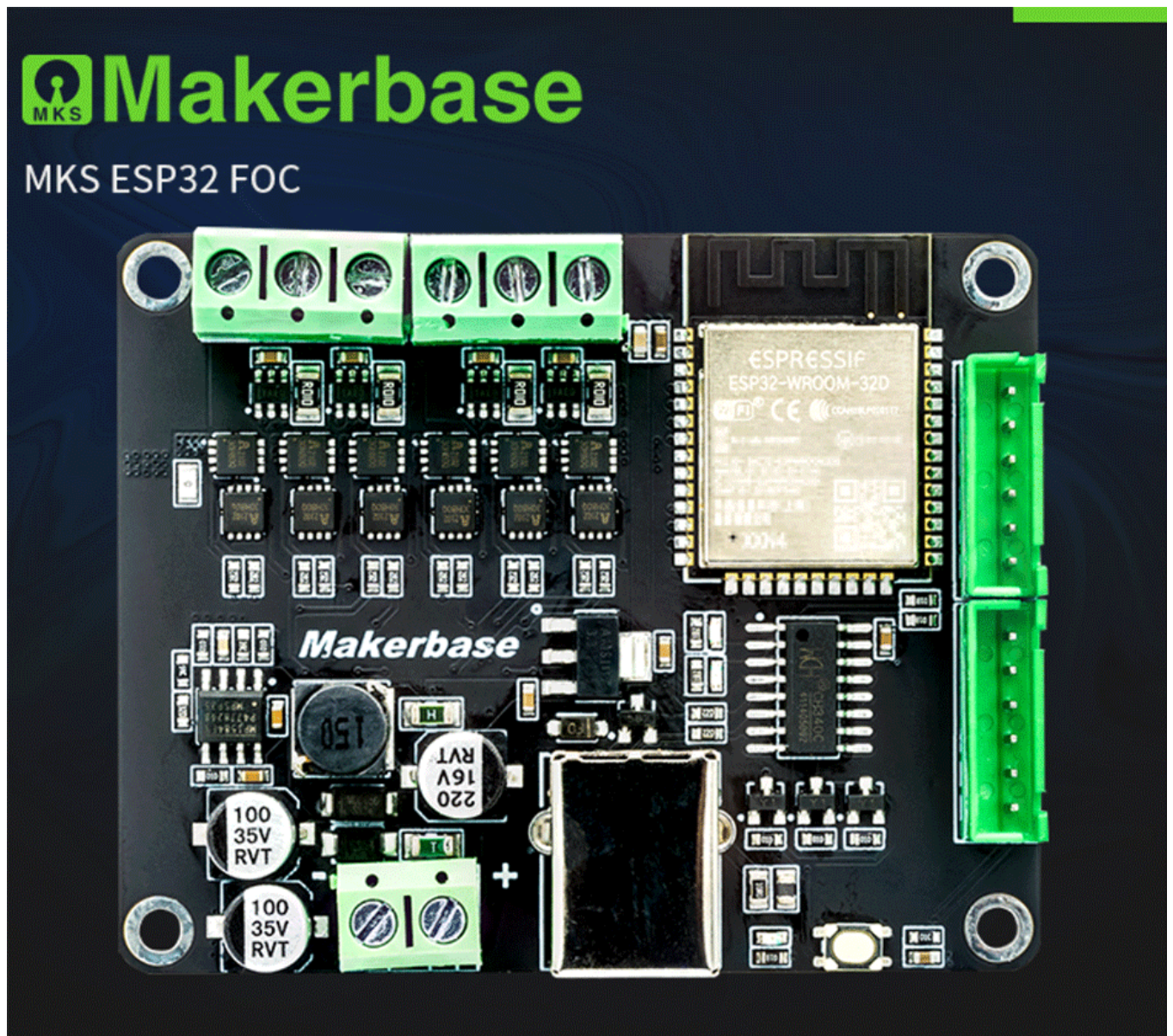
1. Example 1 Double-motor open-loop speed test
2. Example 2 Dual-motor open-loop position test
3. Example 3 I<sup>2</sup>C dual encoder test (AS5600)
4. Example 4 Double-motor closed-loop speed test
5. Example 5 Double-motor closed-loop position test
6. Example 6 Dual-motor closed-loop position-torque mutual control
7. Example 7 Dual motor current control
8. Example 8 Motor Knob Control
9. Example 9 Online Current Sense
10. Example 10 Stepper Motor Open Loop Speed Test

MKS Github:

<https://github.com/makerbase-motor/MKS-ESP32FOC/tree/master/Hardware>

Test Code in Github:

<https://github.com/makerbase-motor/MKS-ESP32FOC/tree/master/Test%20Code>





**commander**

<https://docs.simplefoc.com/>

**driver**