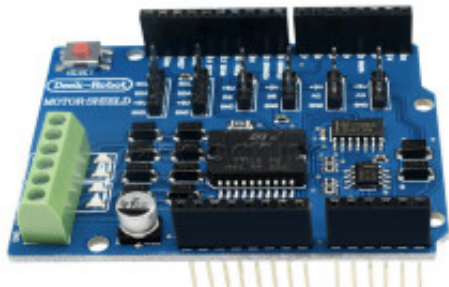


L298P Shield R3 DC Motor Driver Module



Produktkode: 895aa

Tilgjengelighet: 1

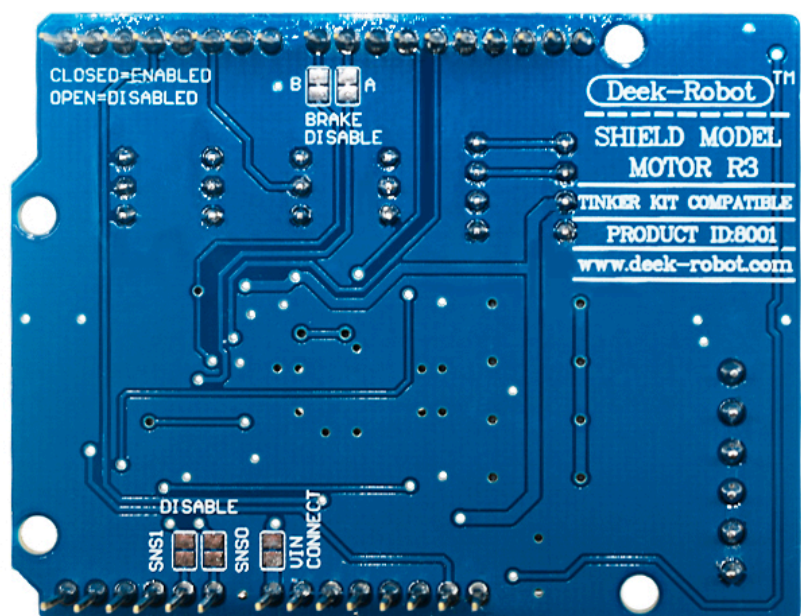
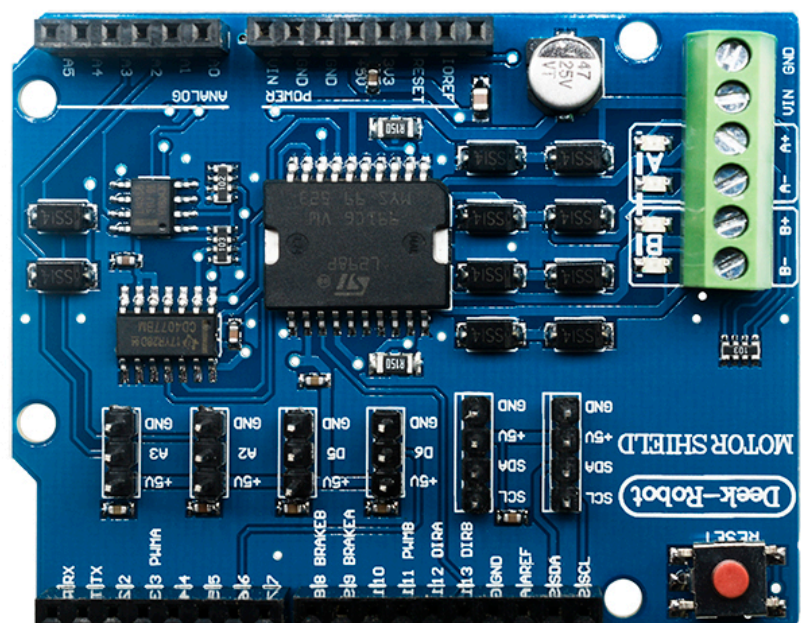
Lager : Motorkontroll

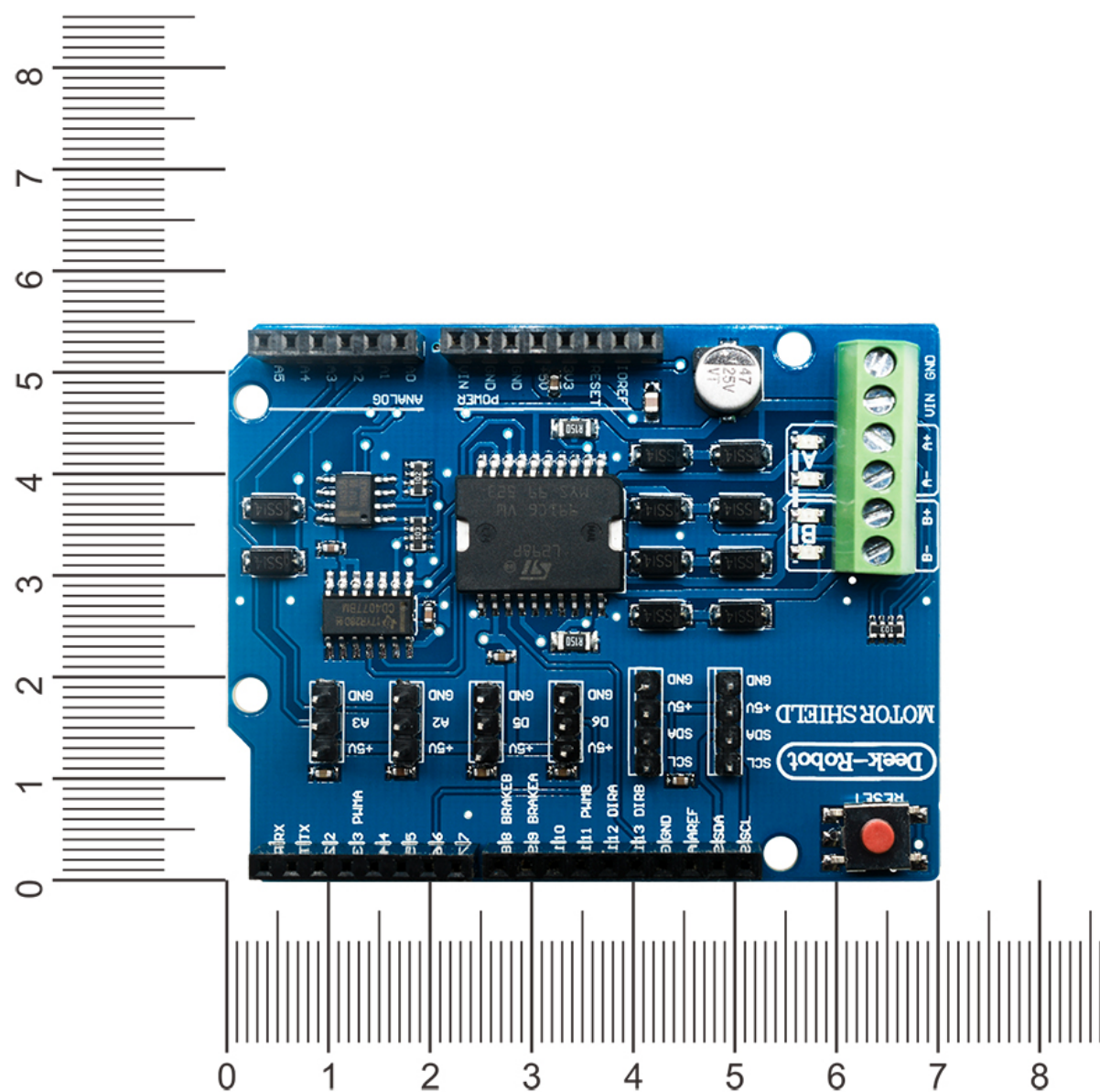
Pris: kr. 180,00

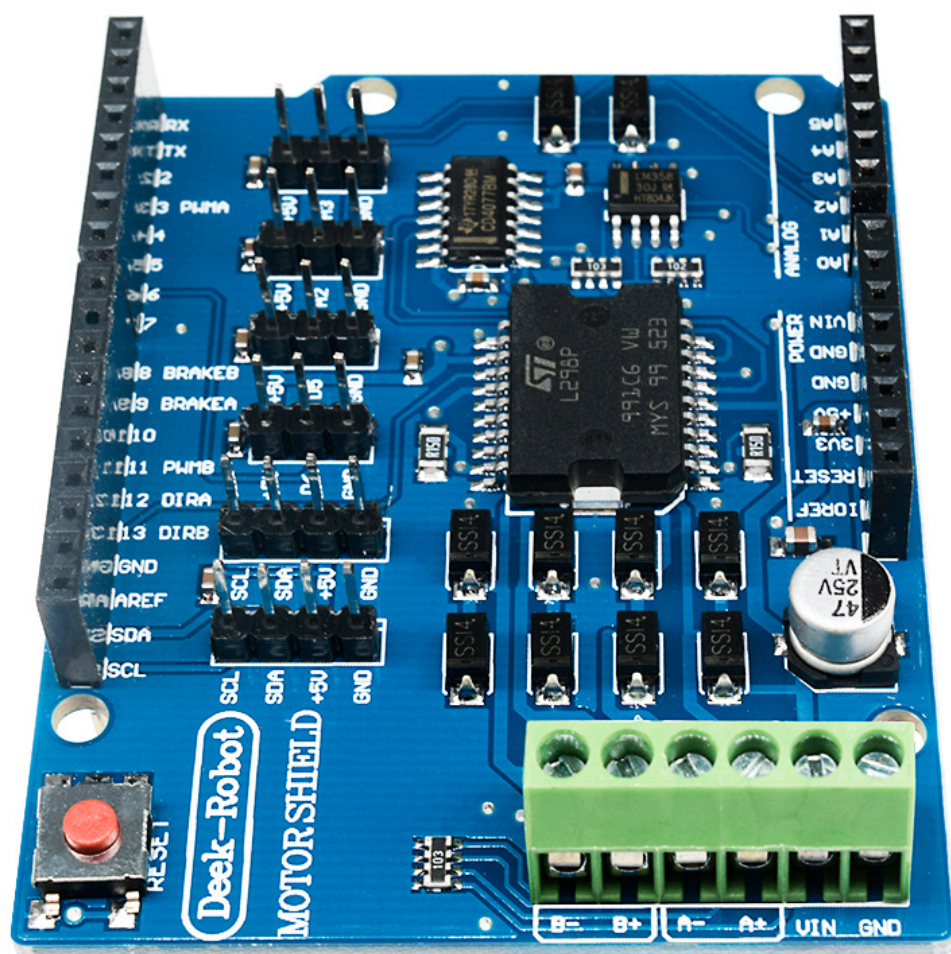
Short Description

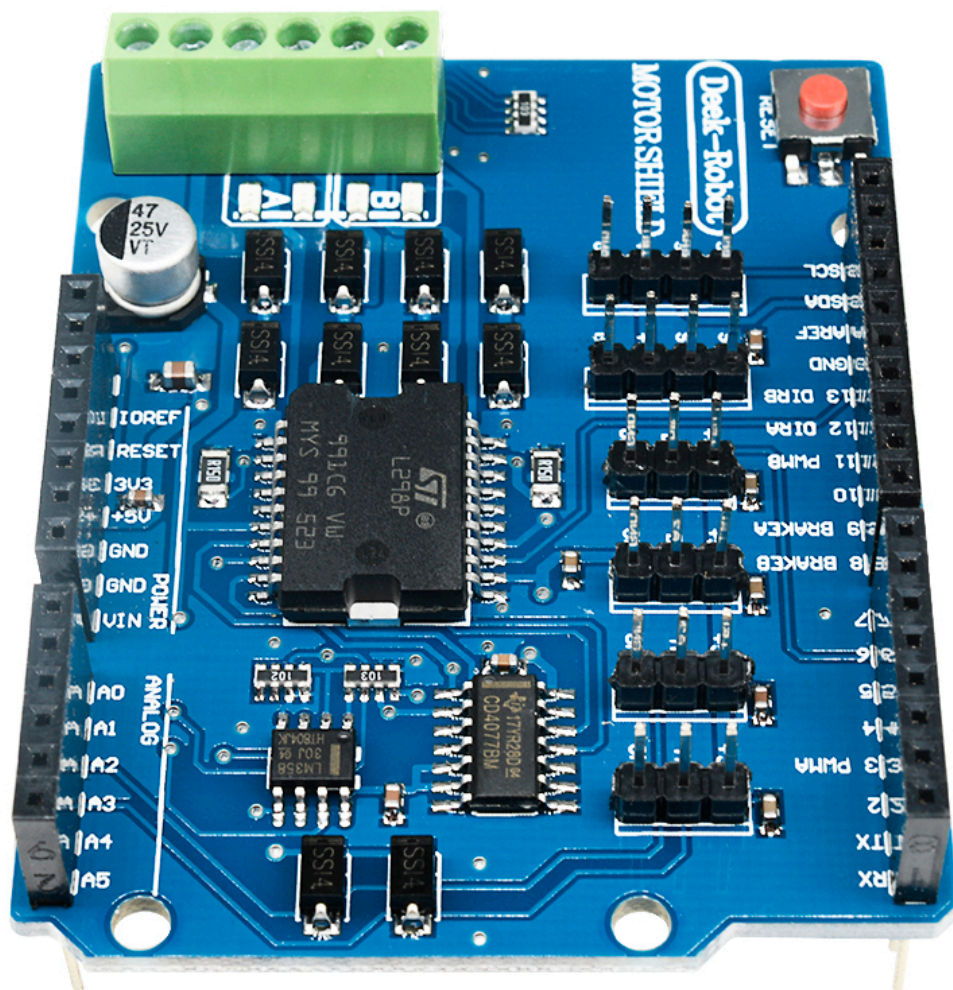
L298P Shield R3 DC Motor Driver Module 2A H-Bridge 2 way UNO 2560 For Arduino

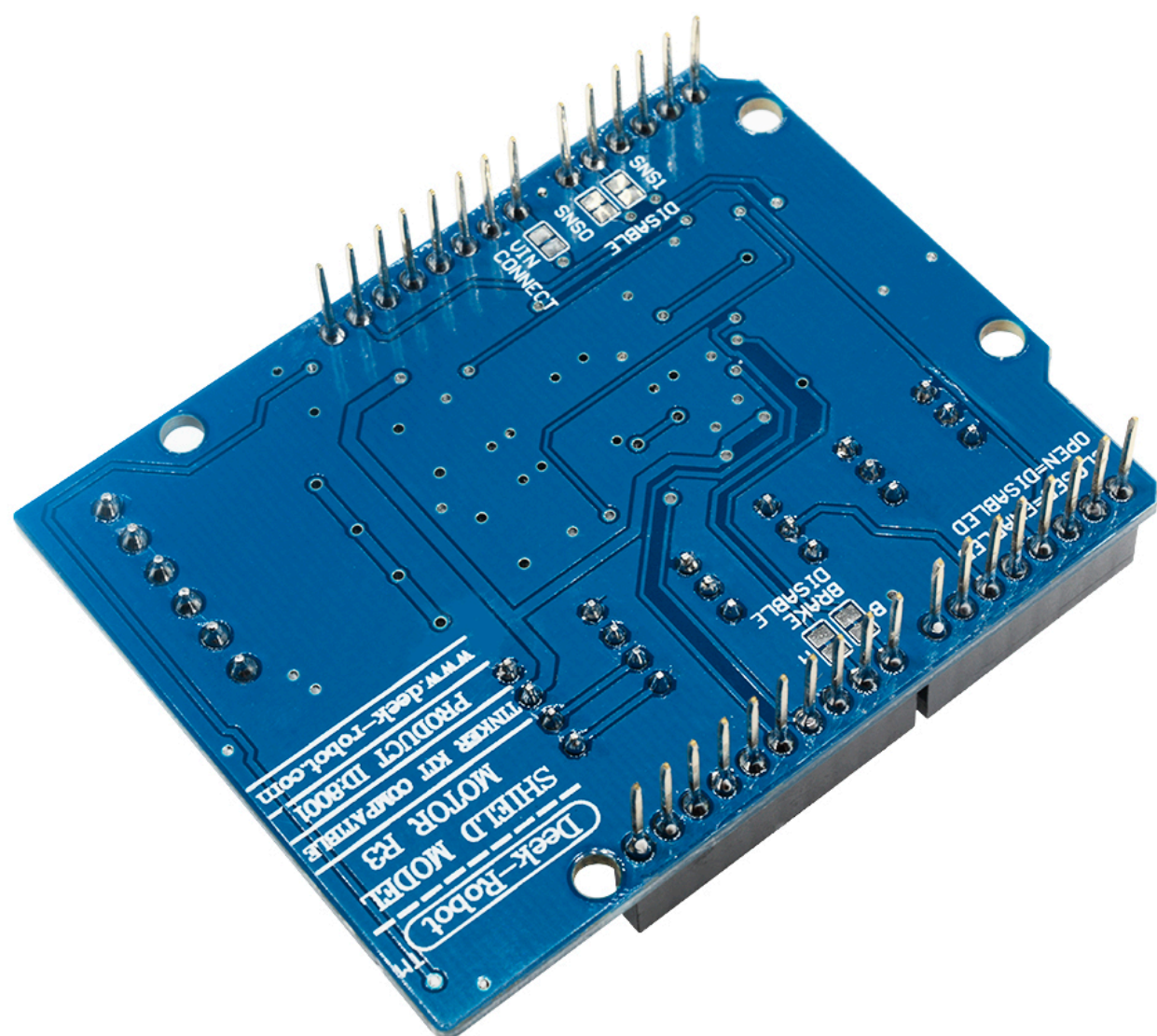
Beskrivelse

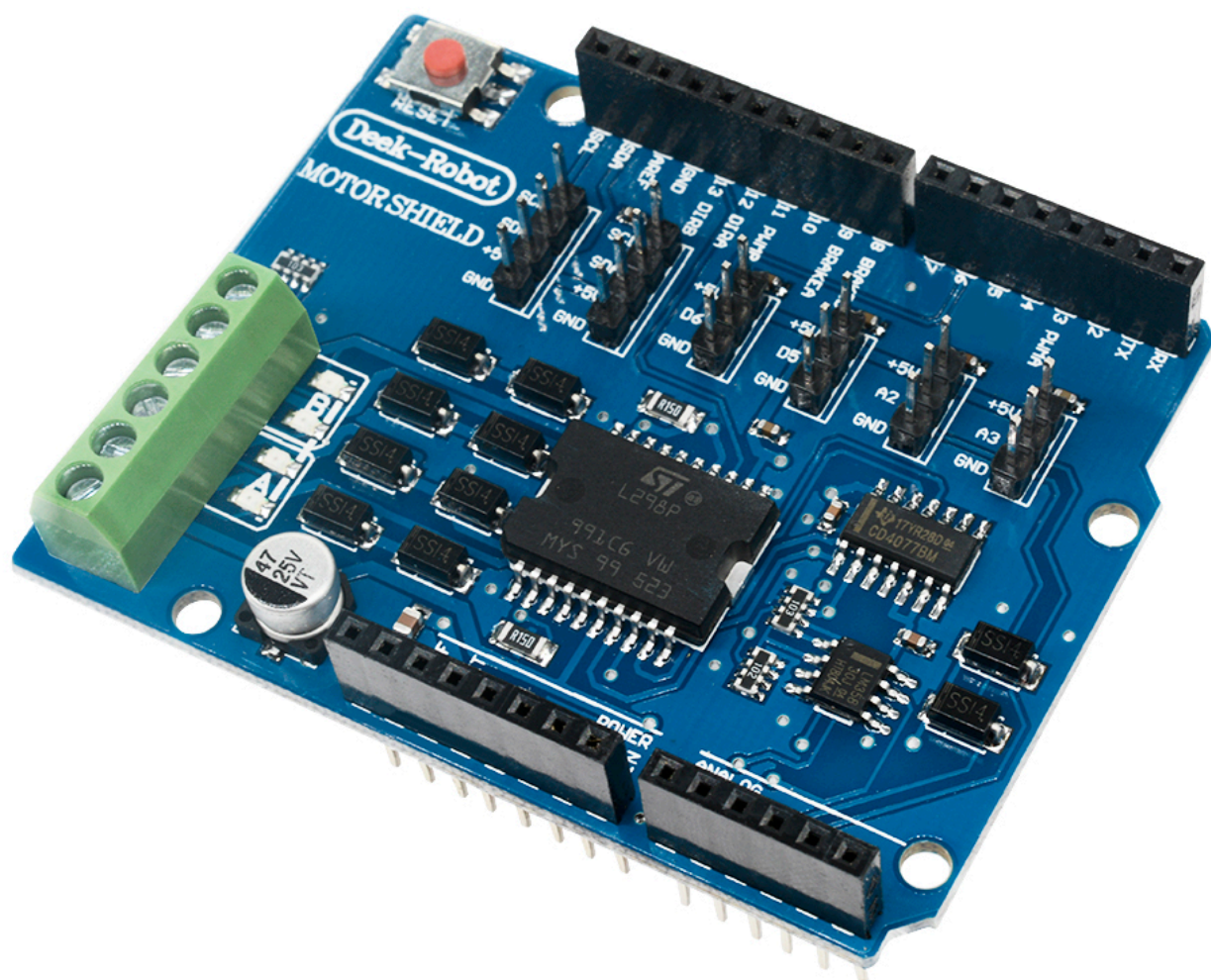


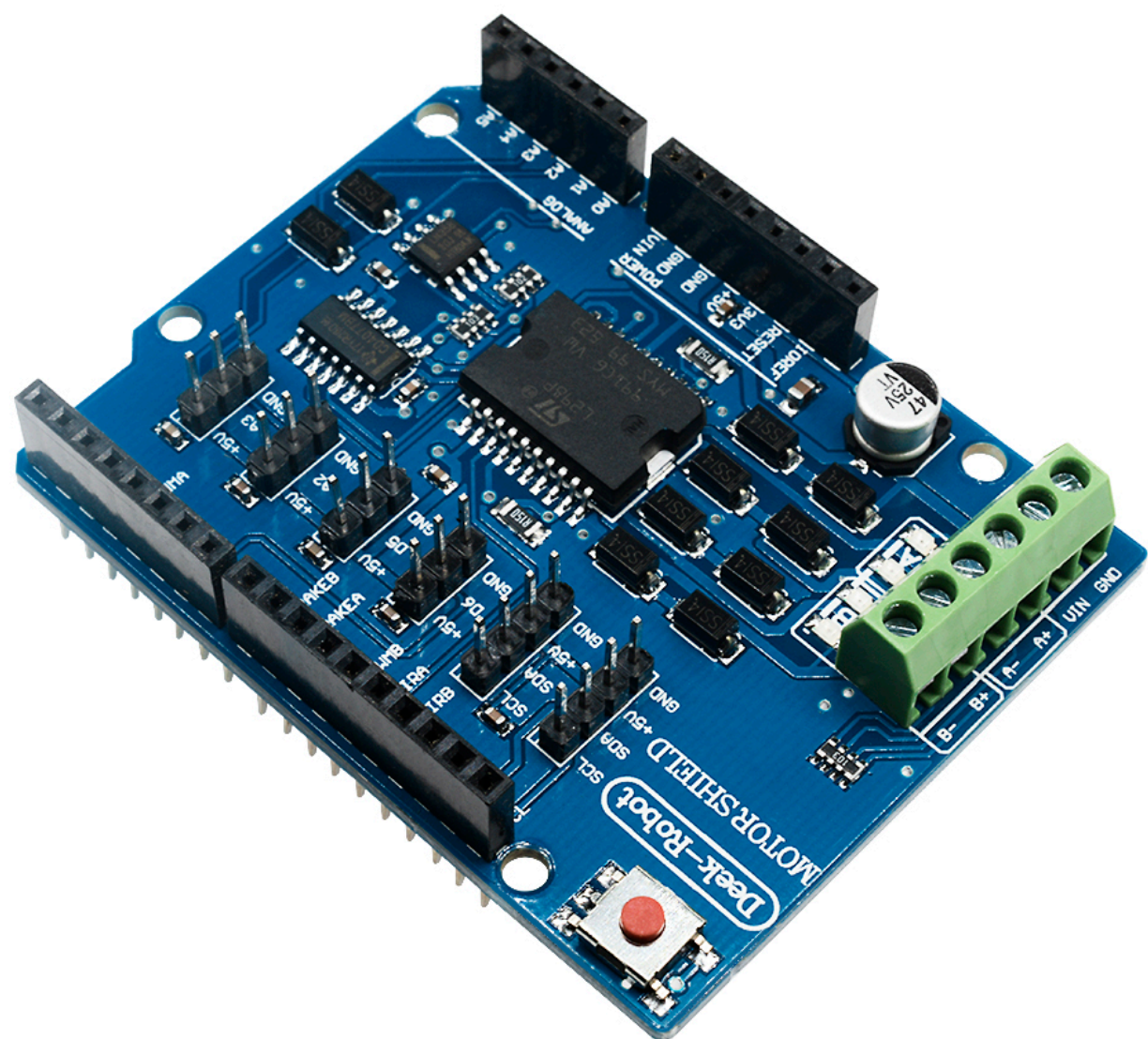


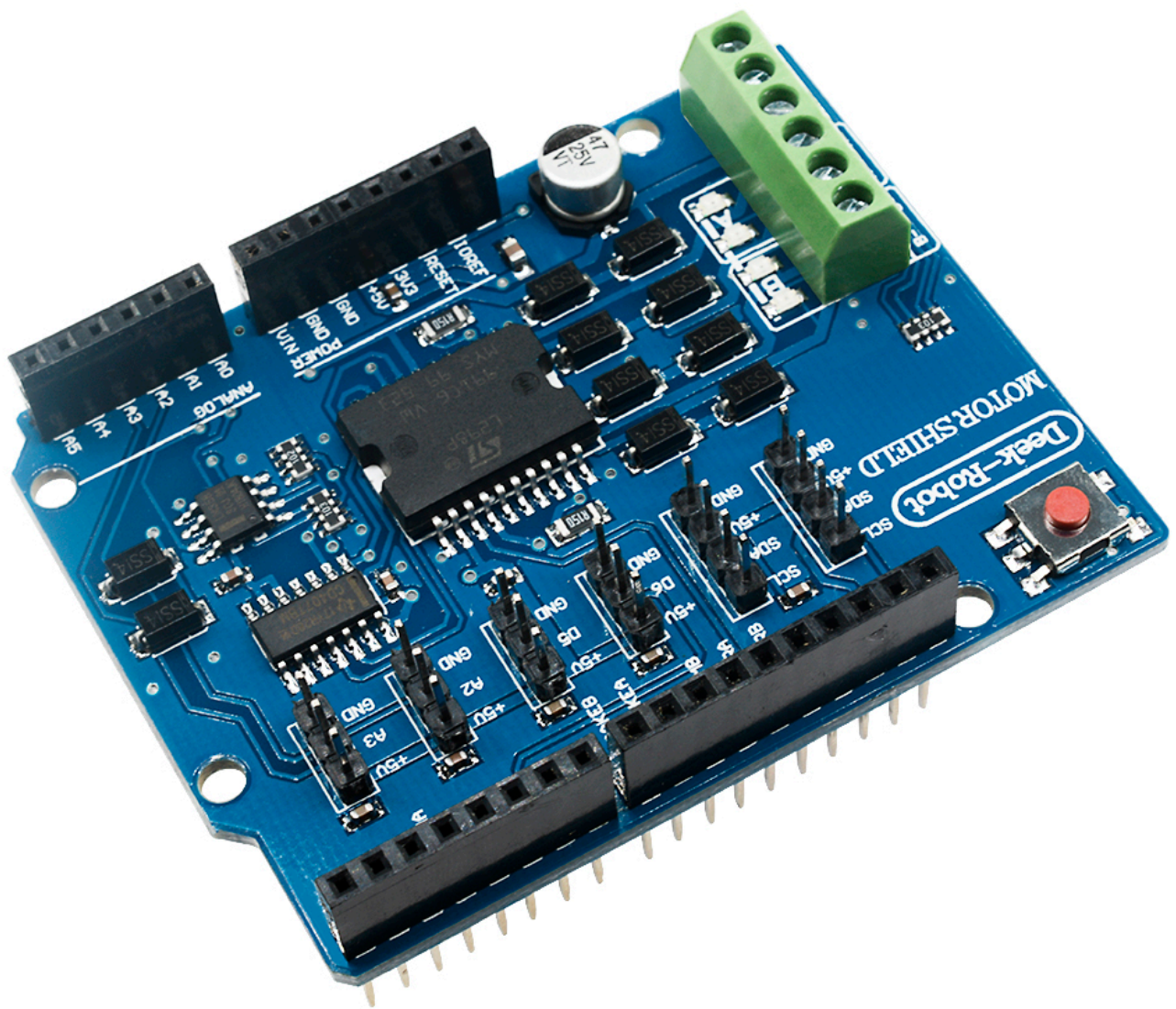


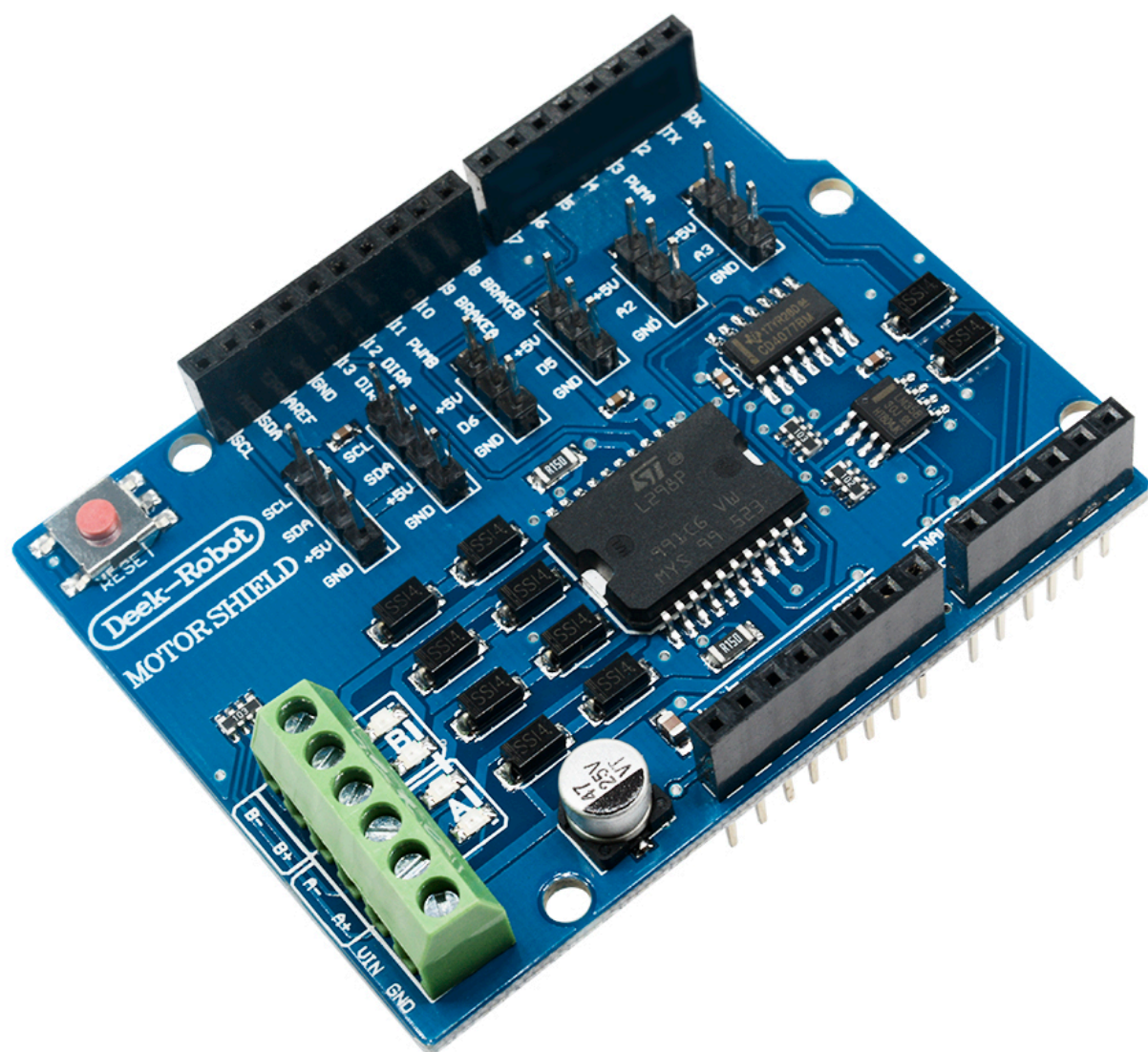


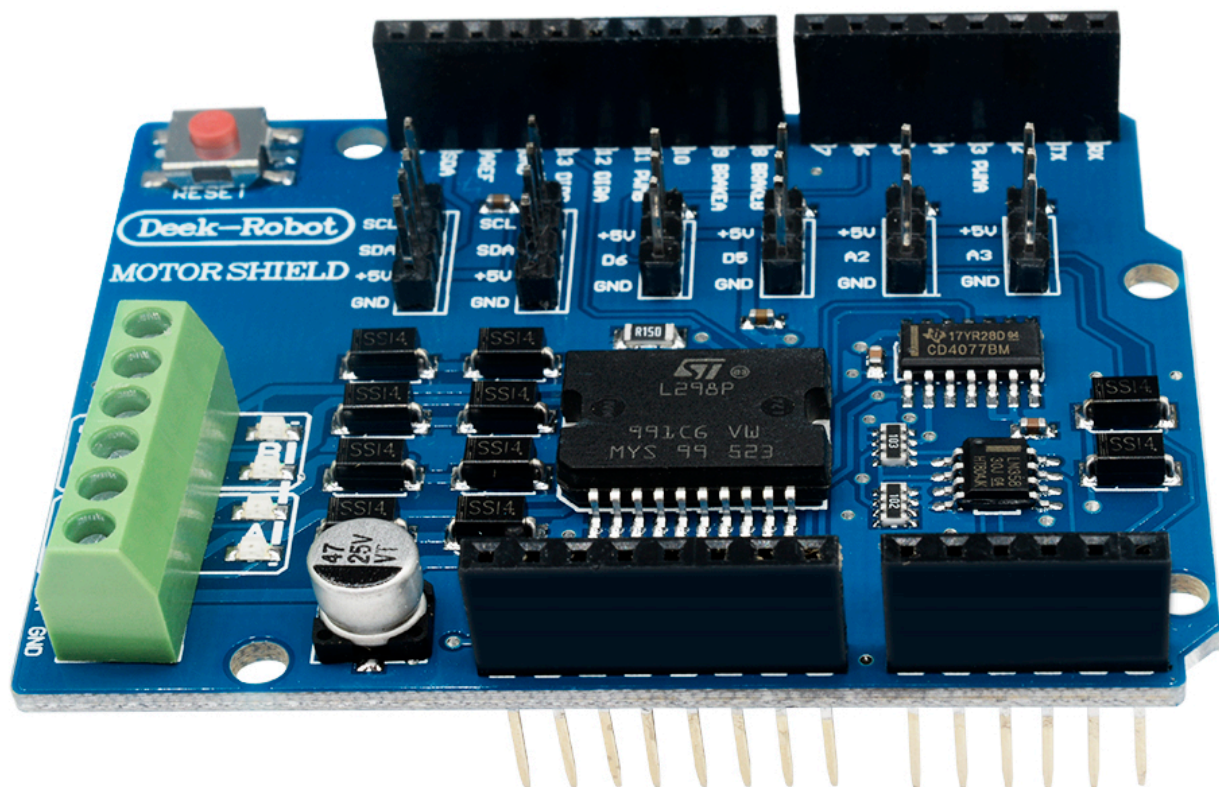


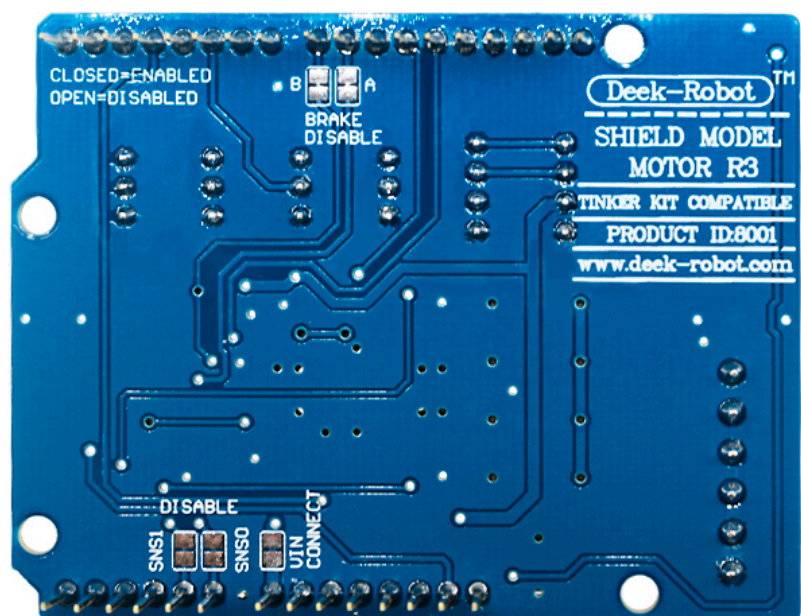
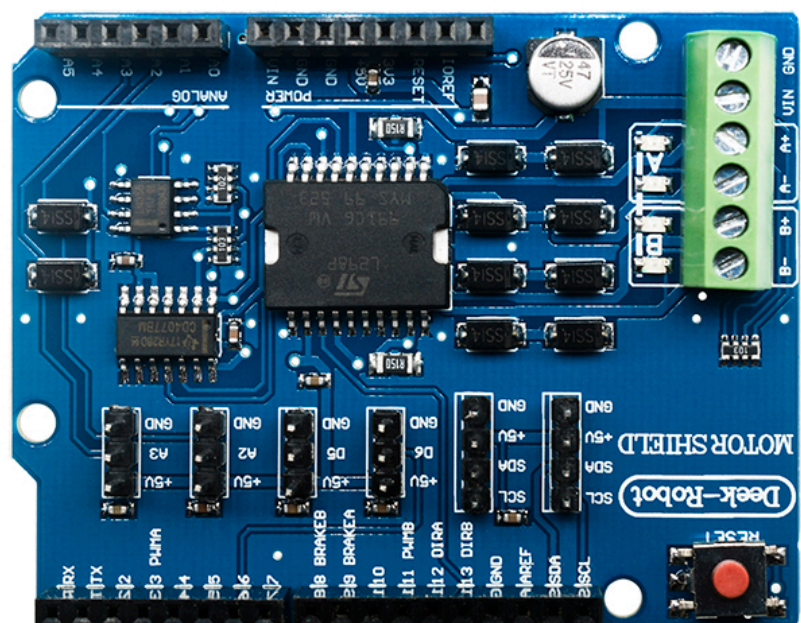


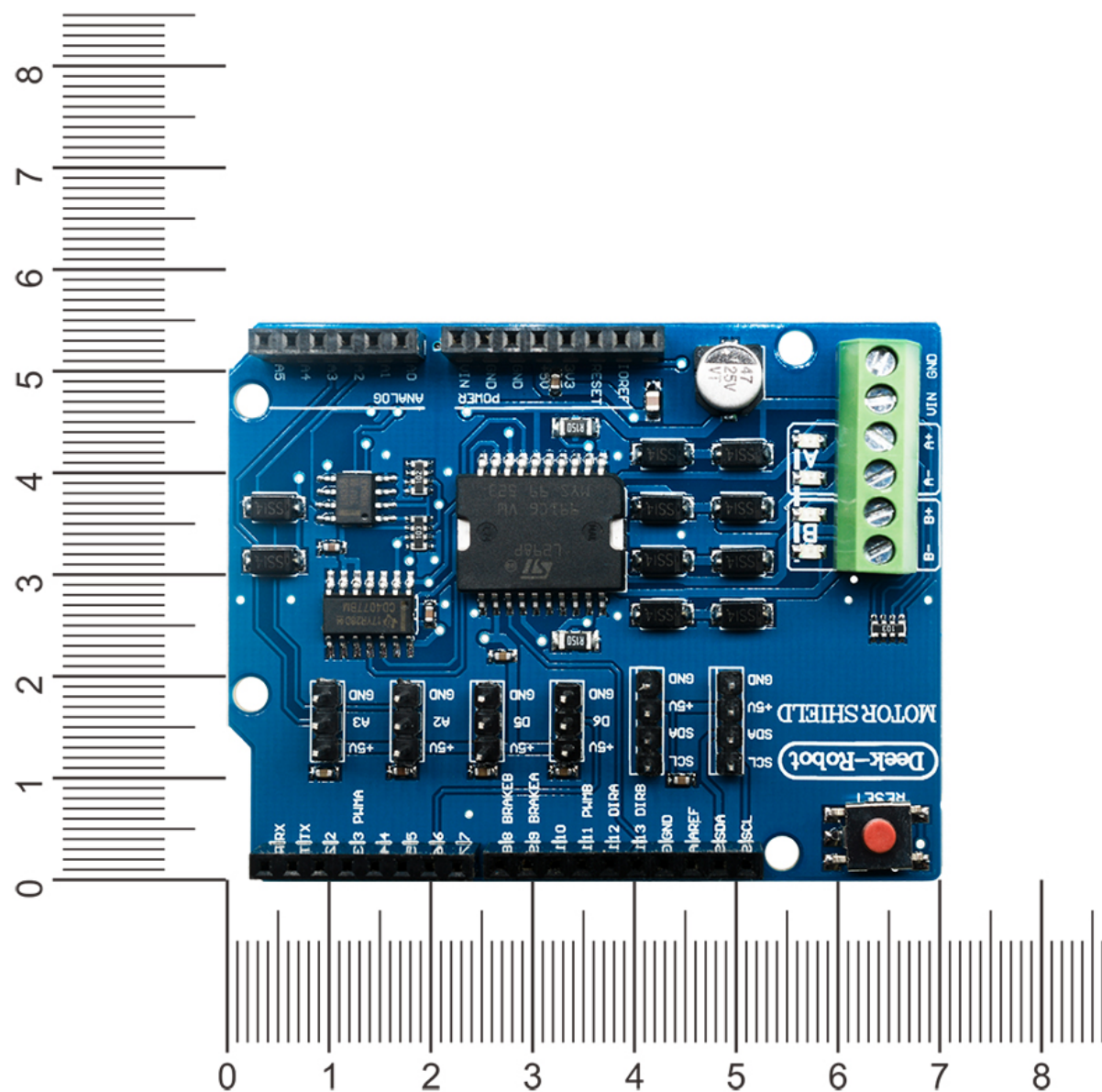


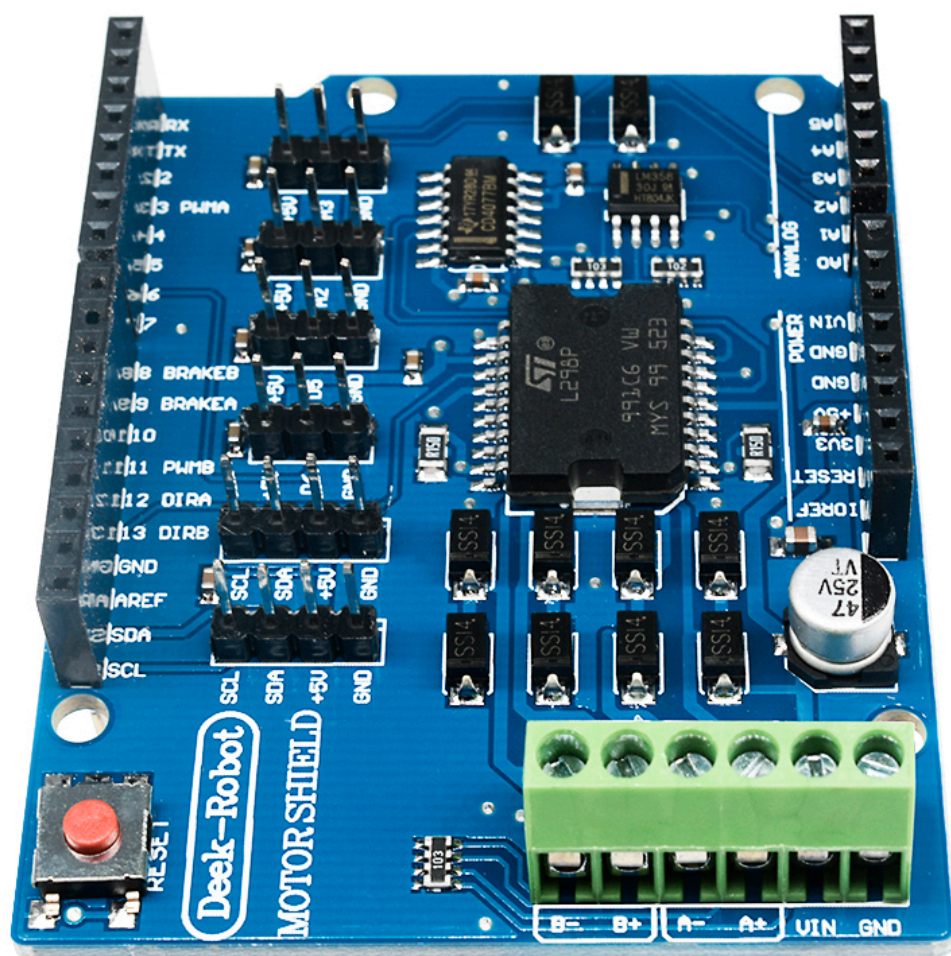


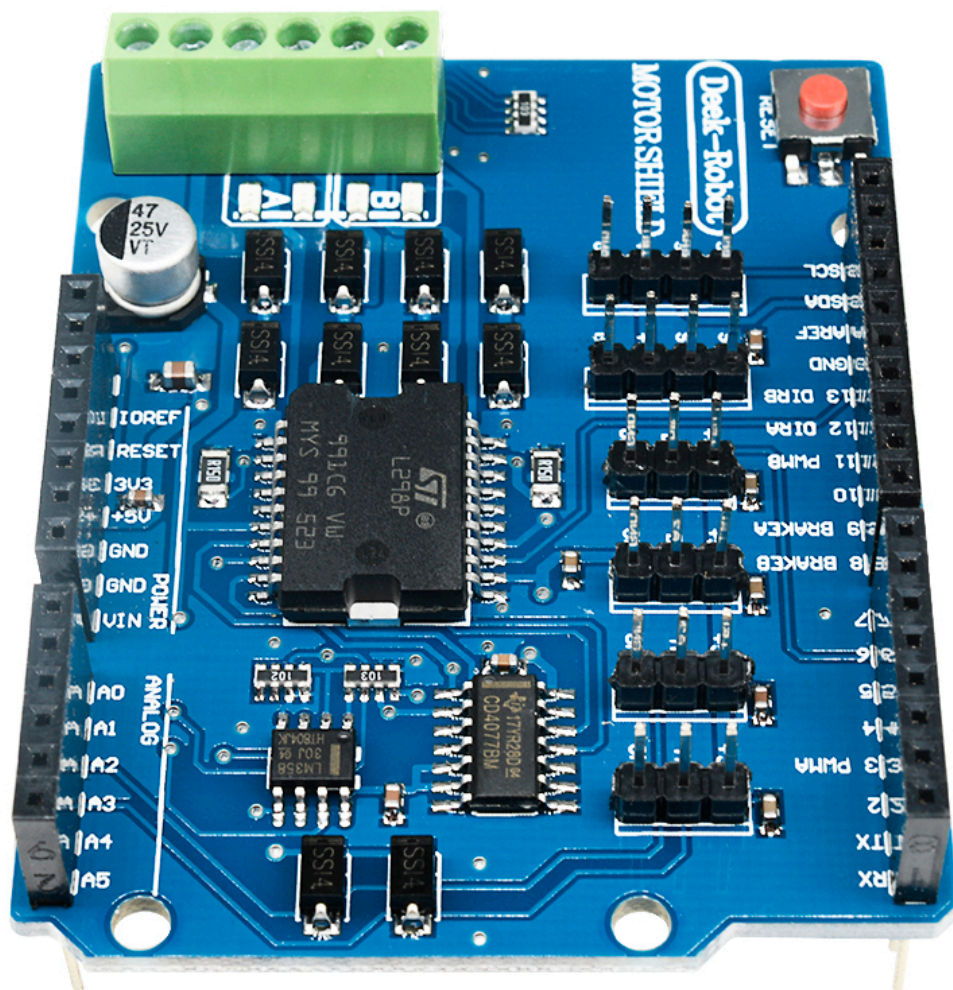


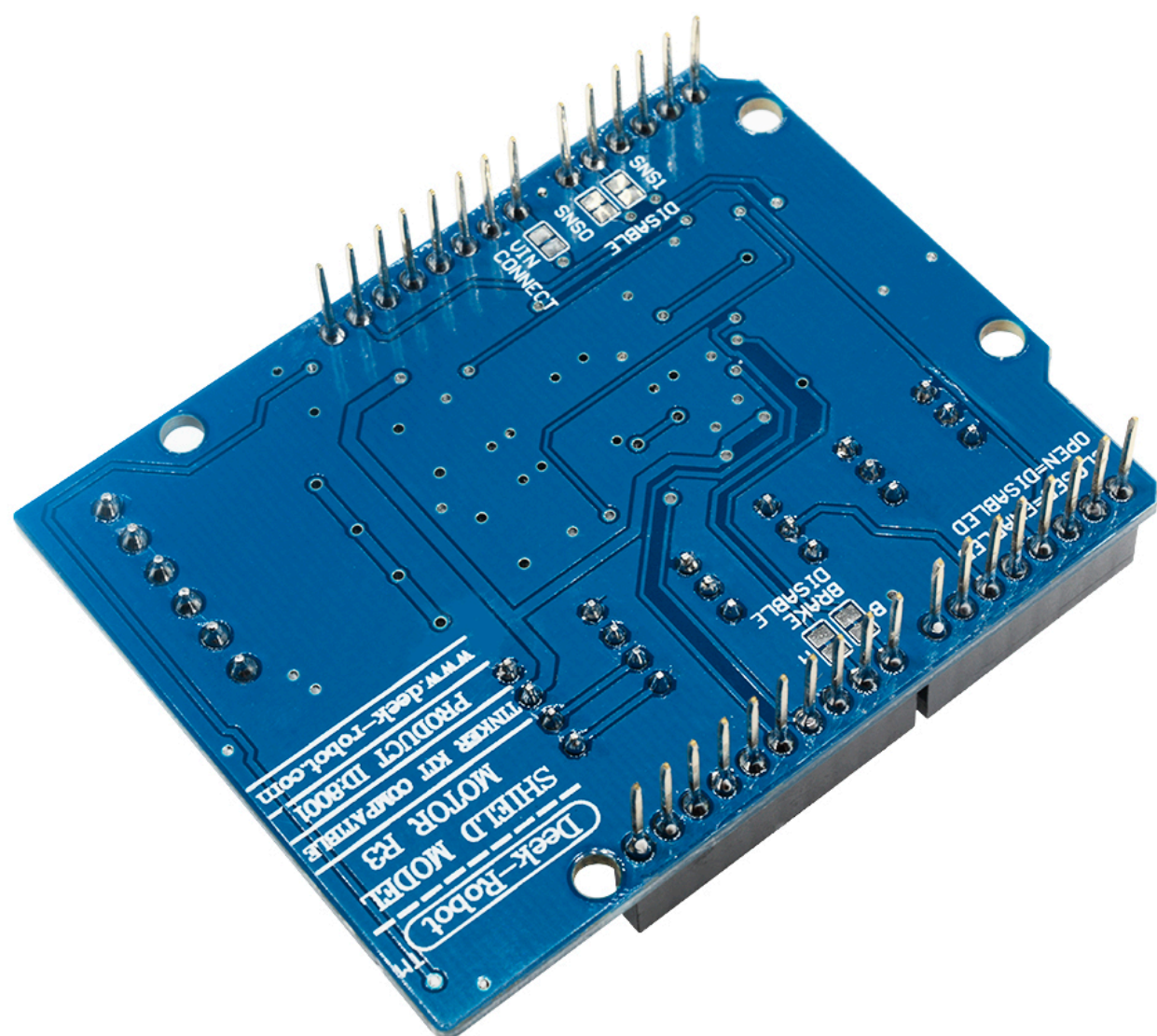


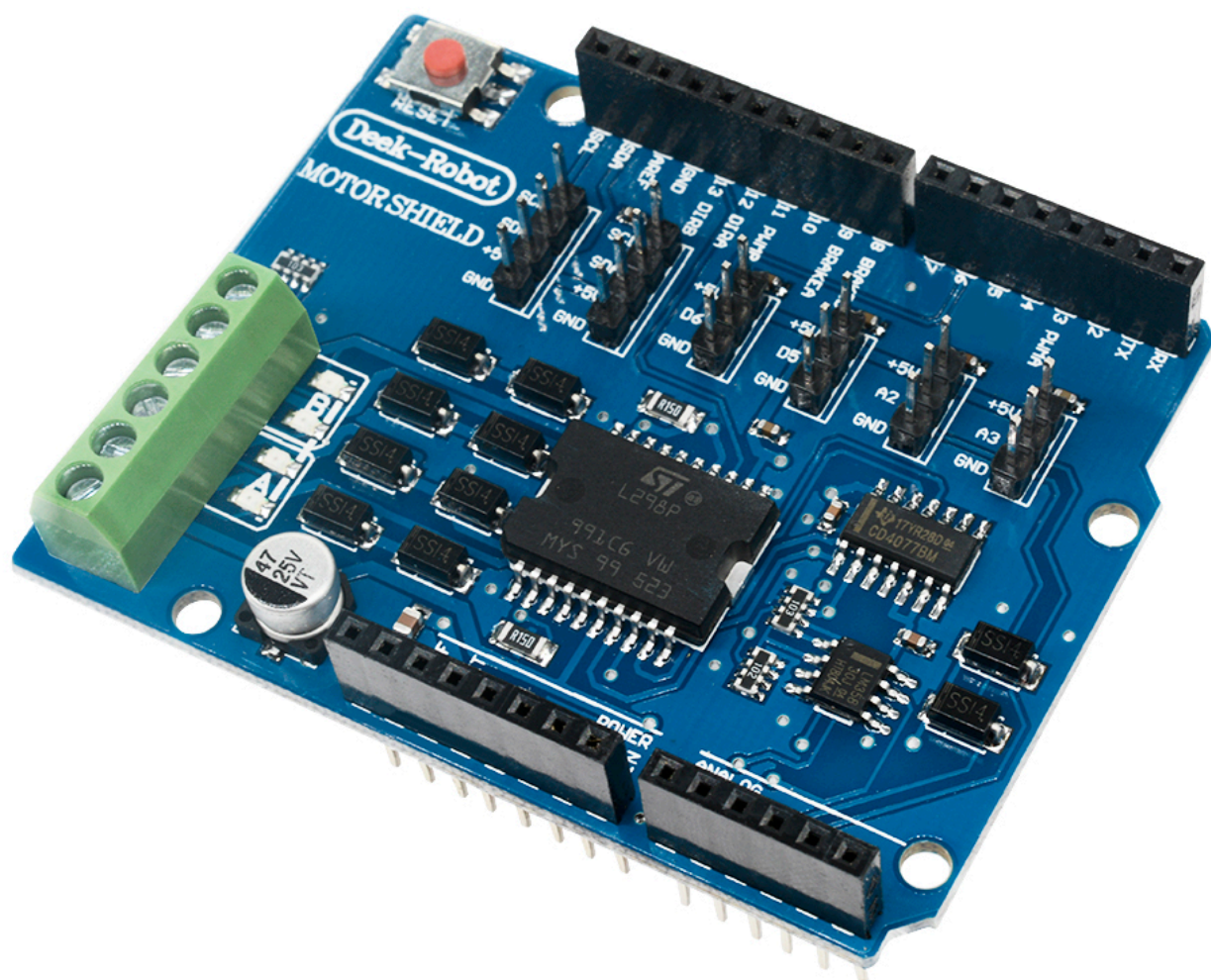


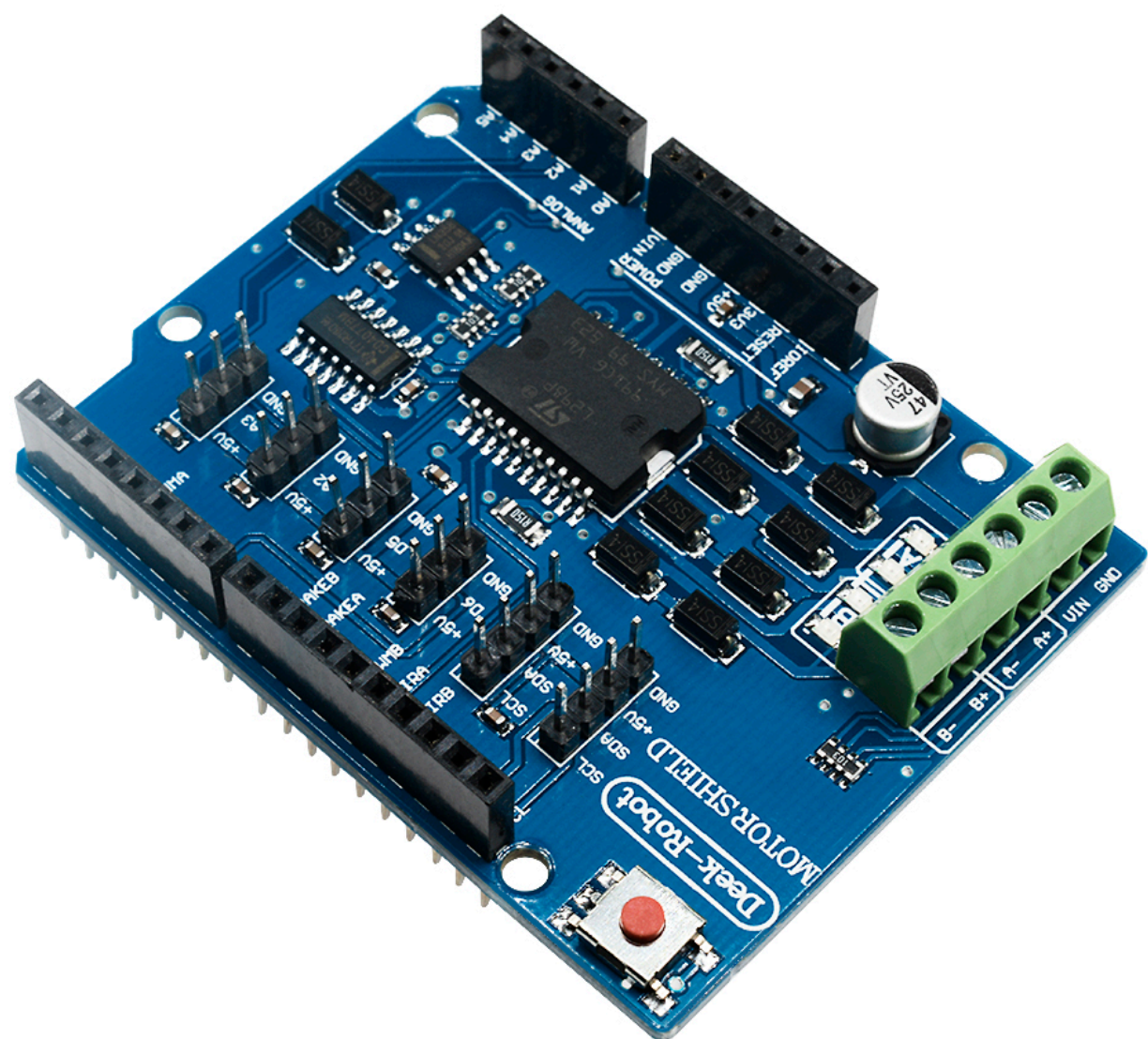


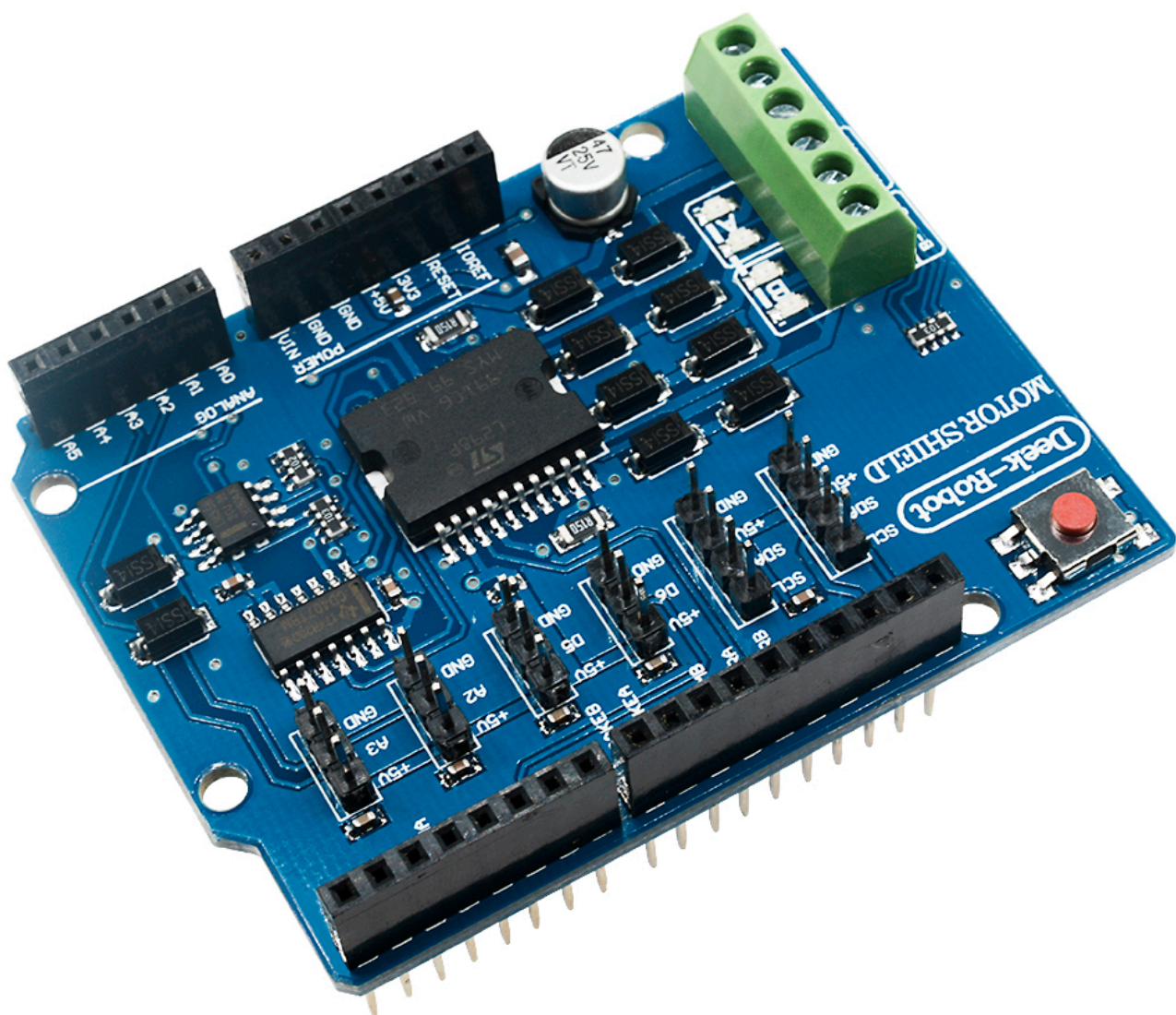


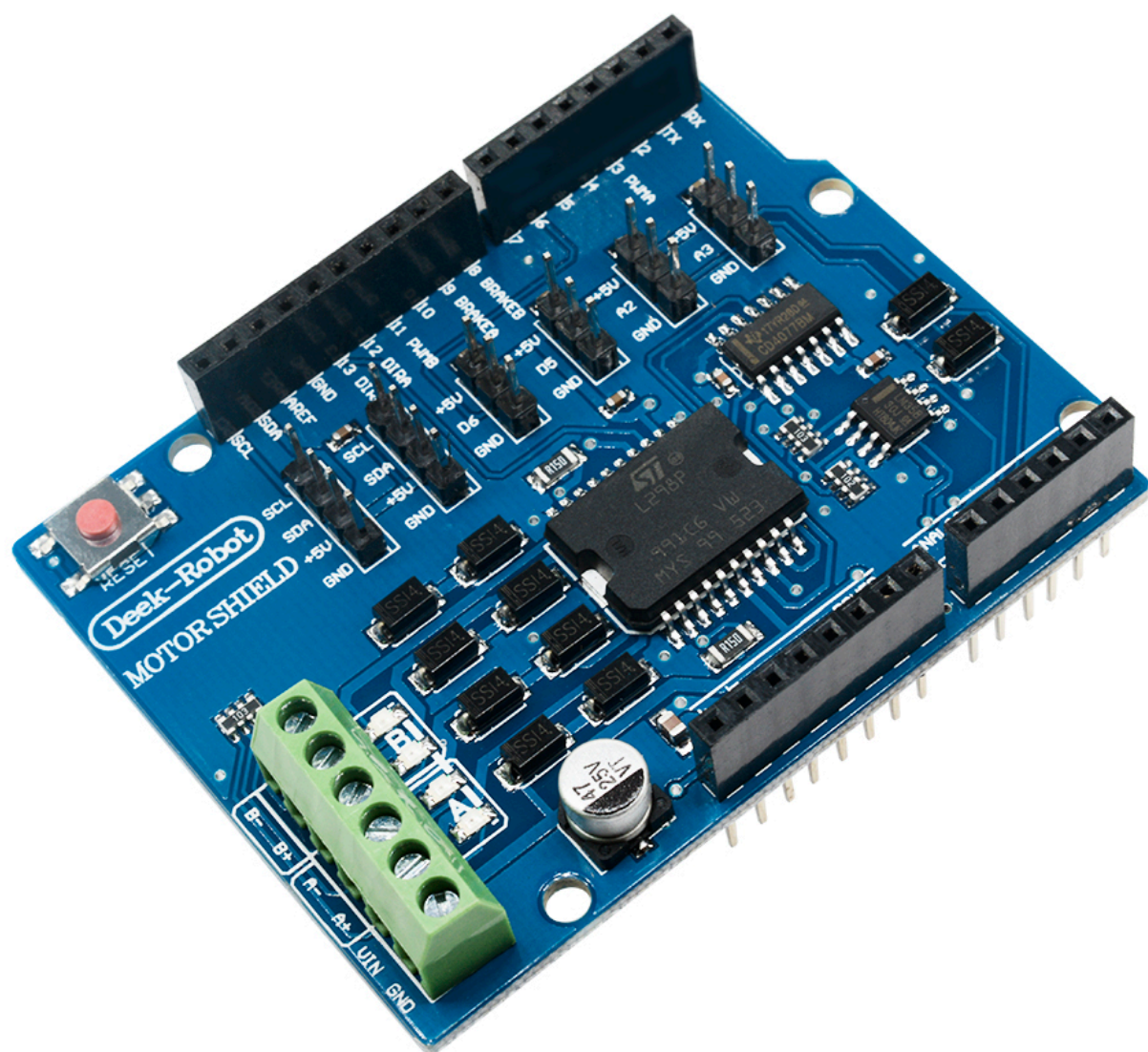


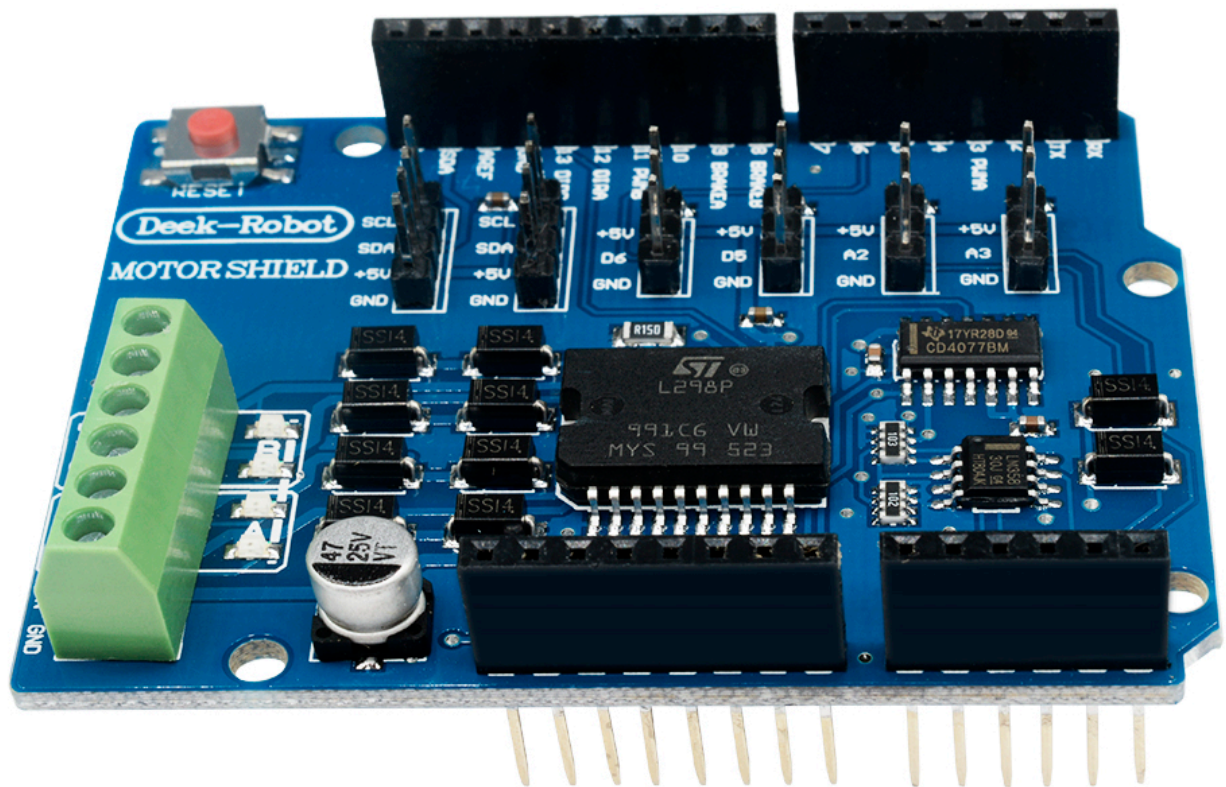


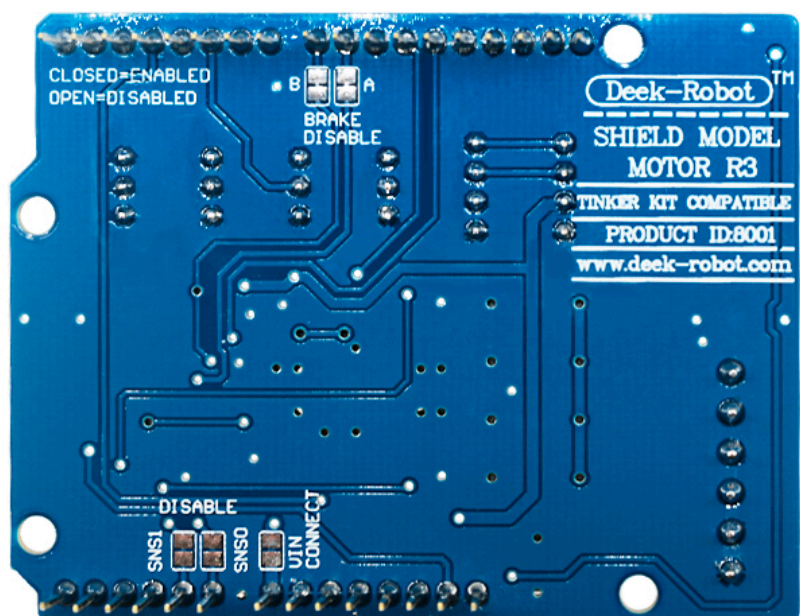
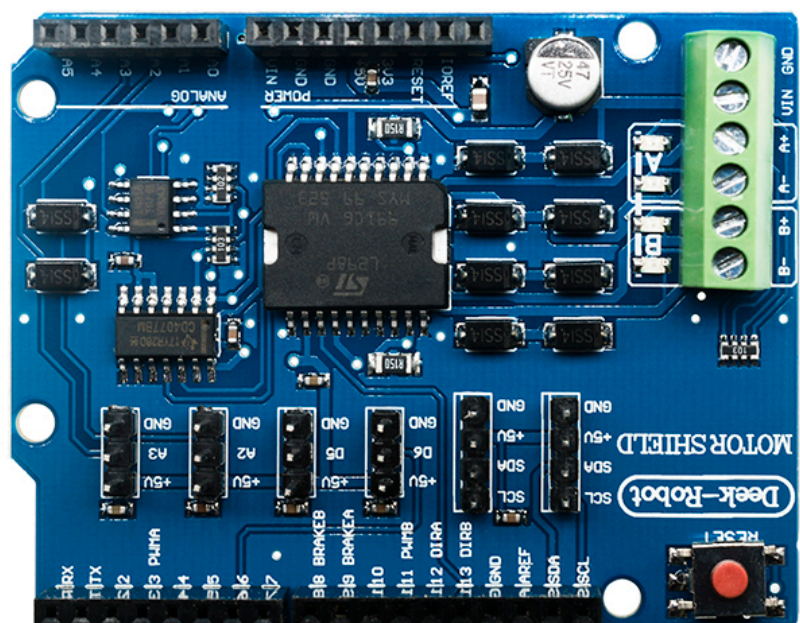


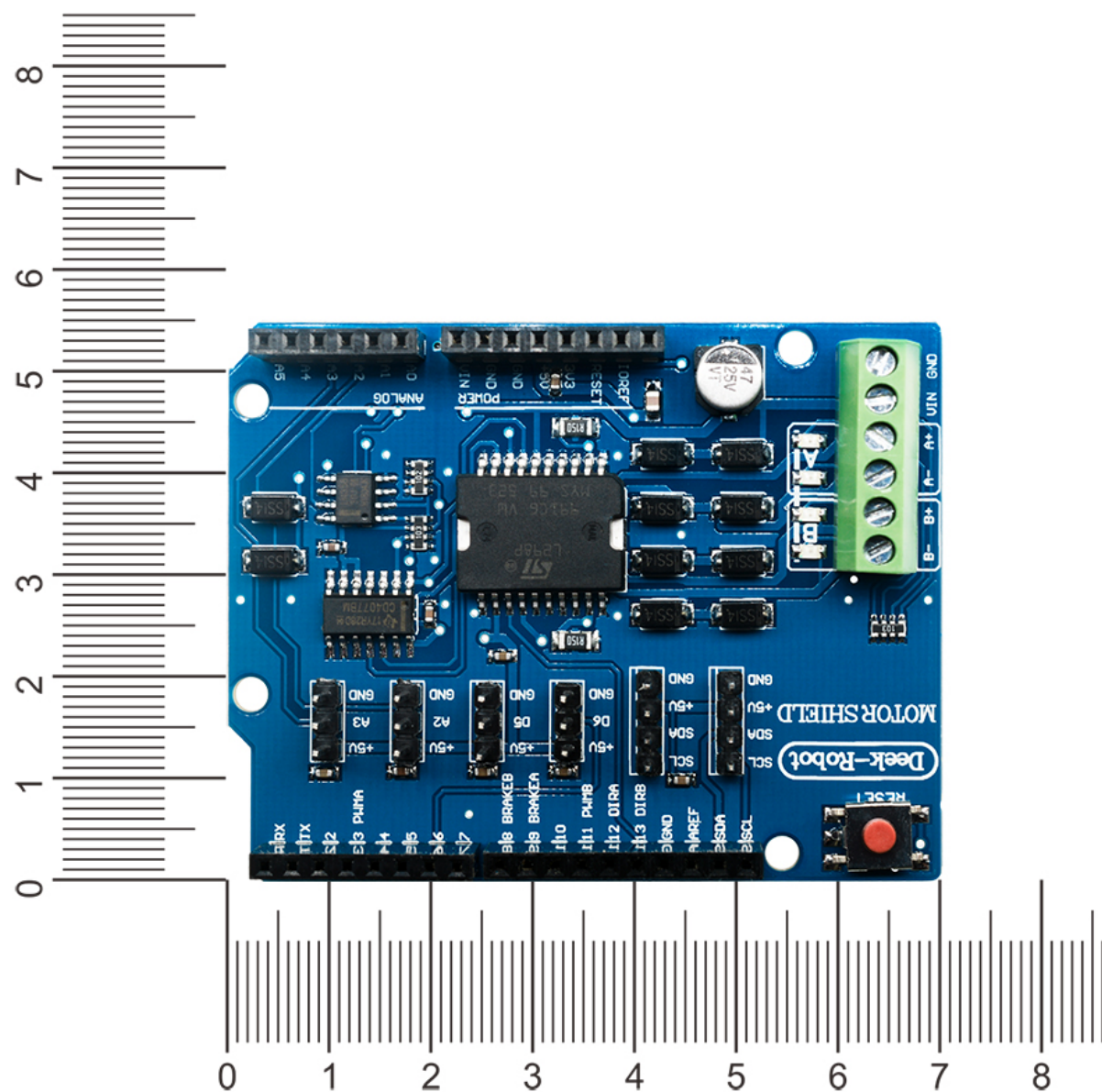


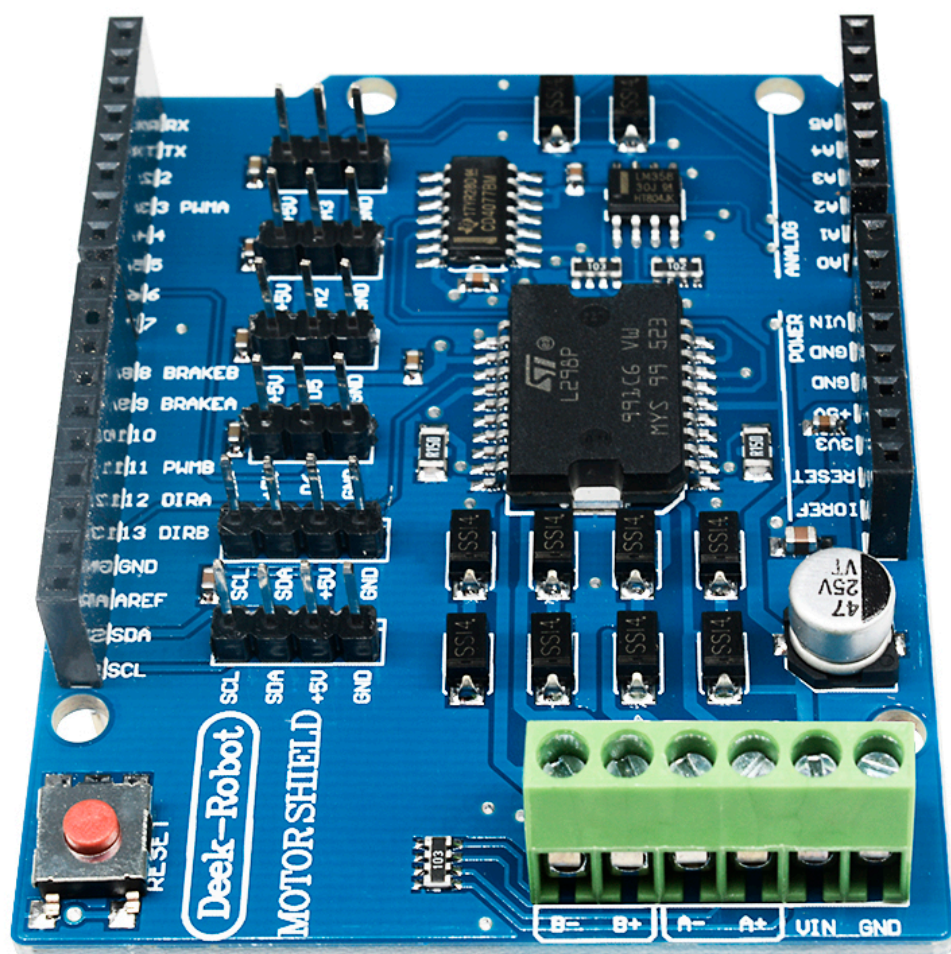


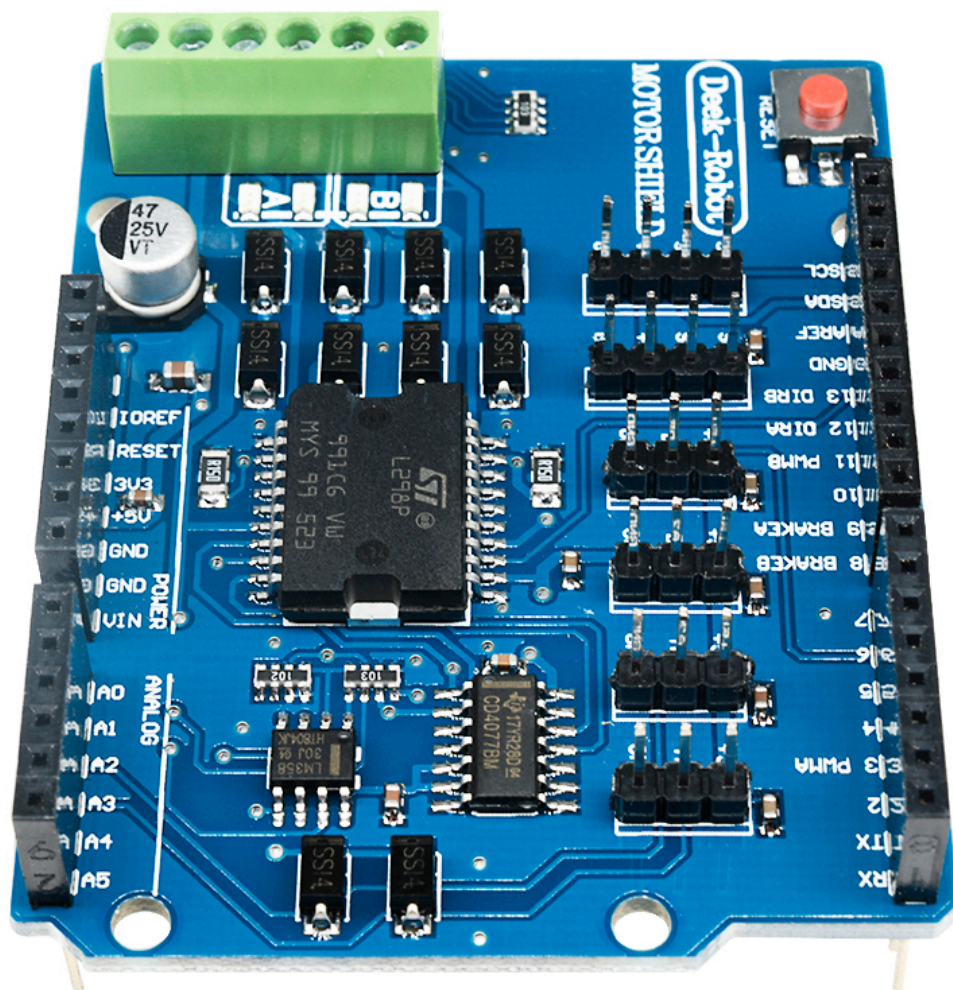


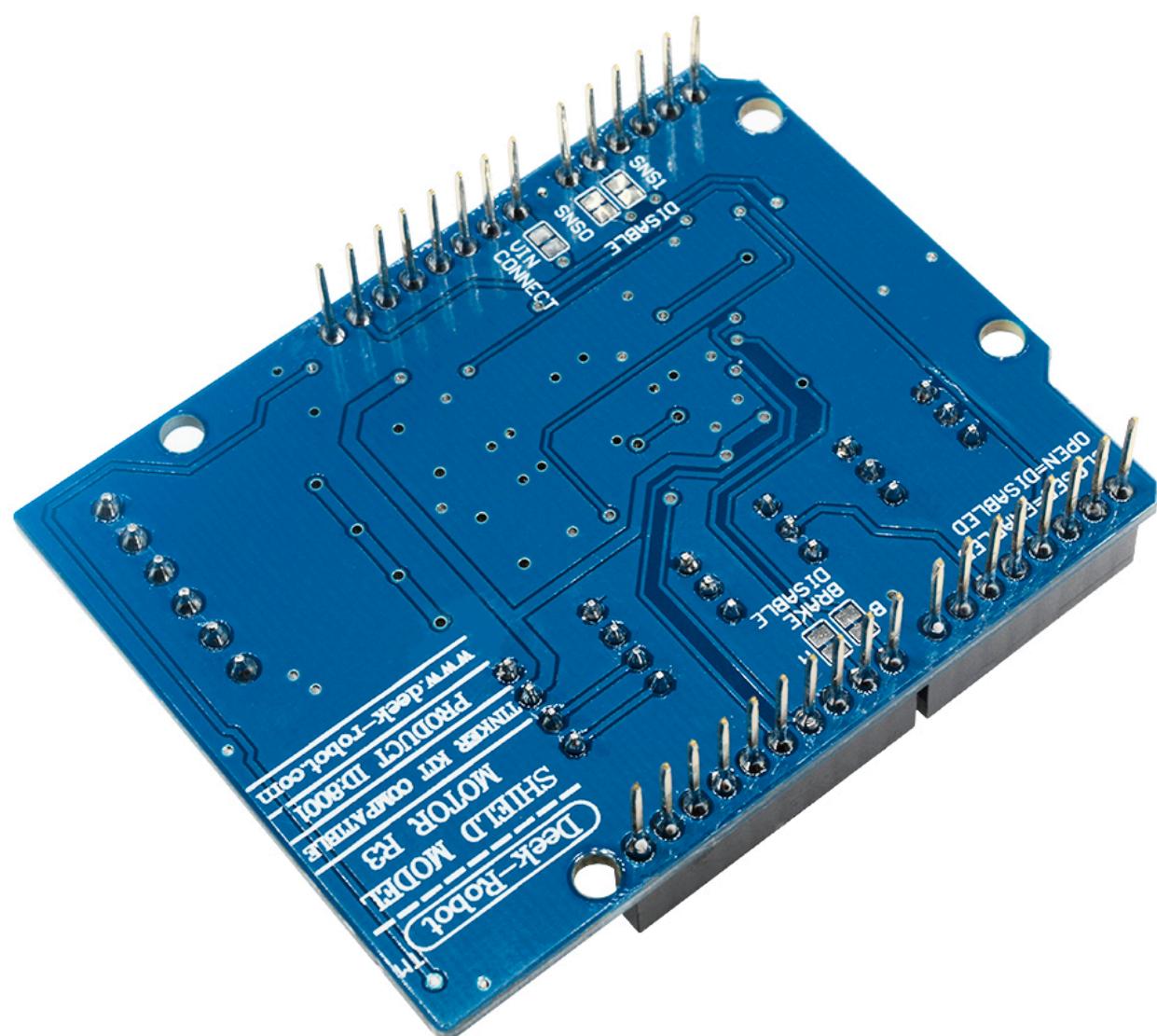


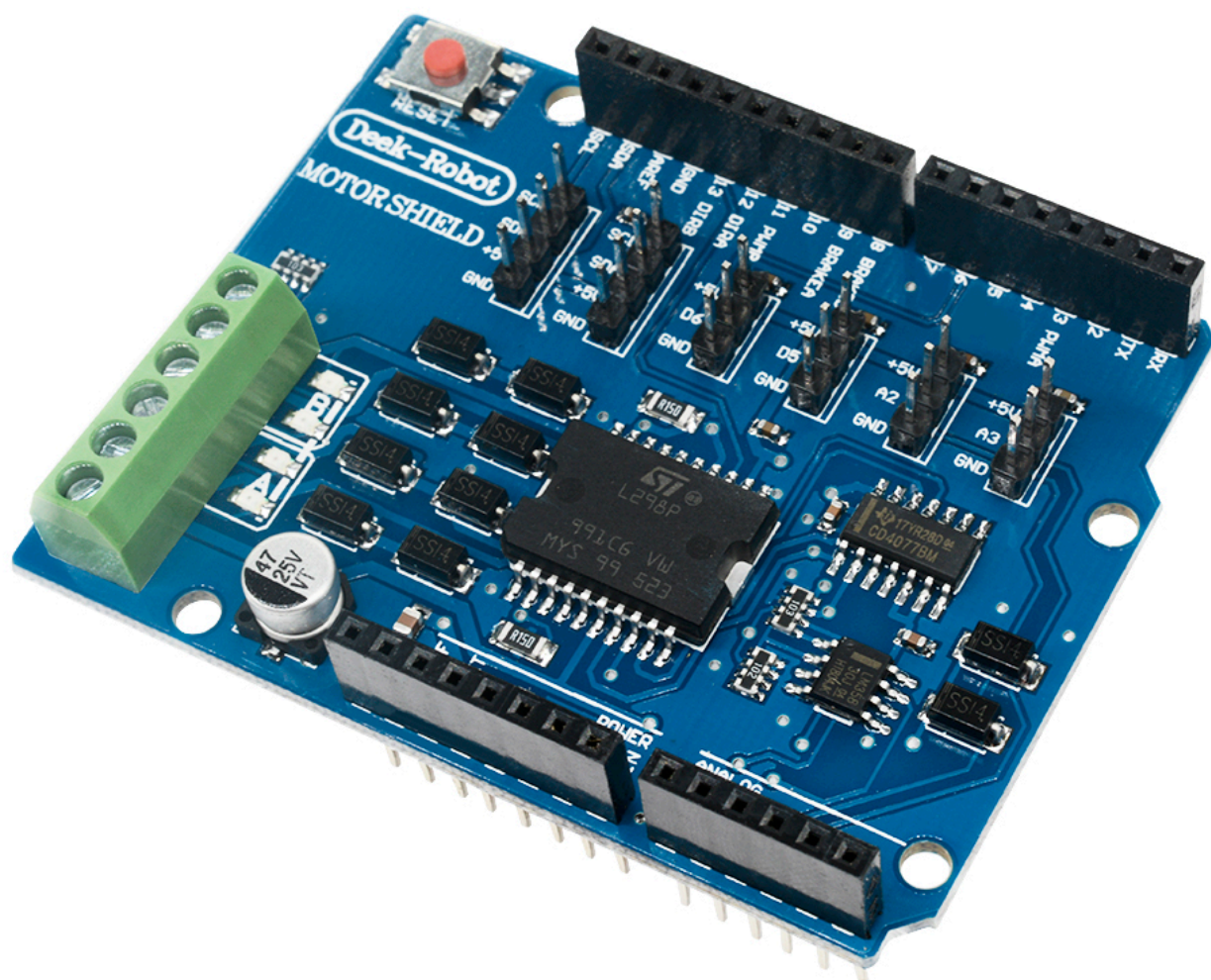


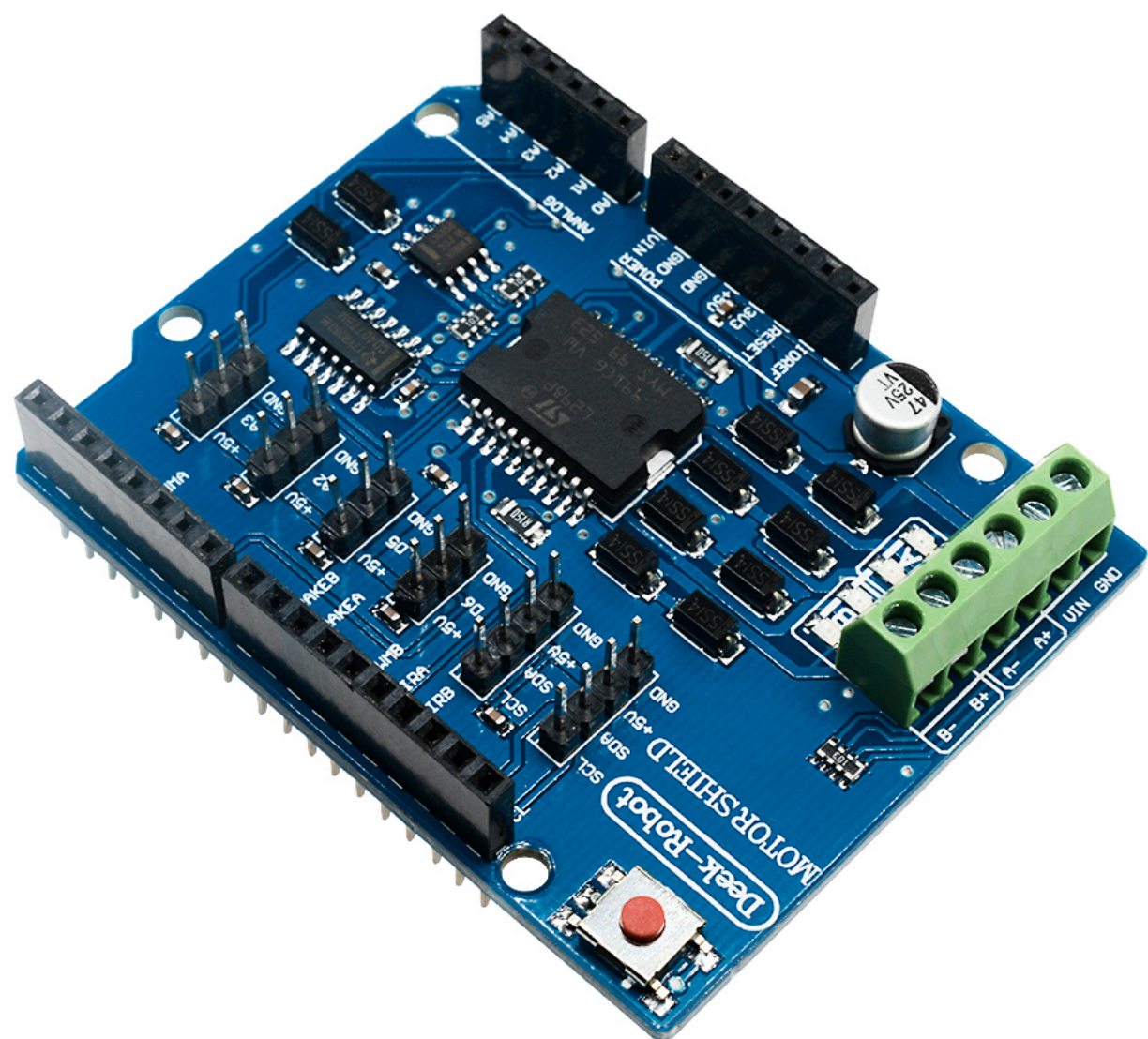


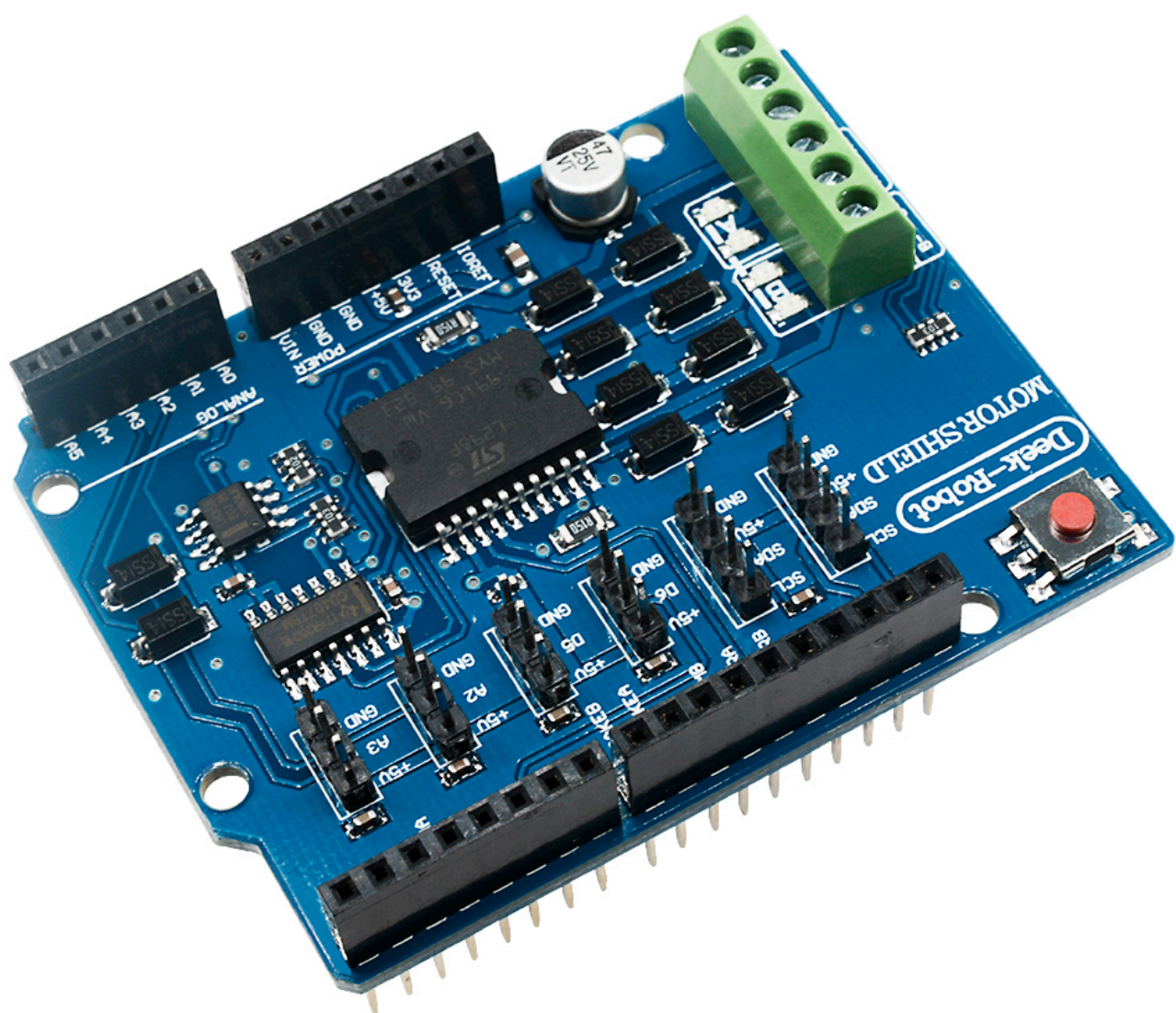


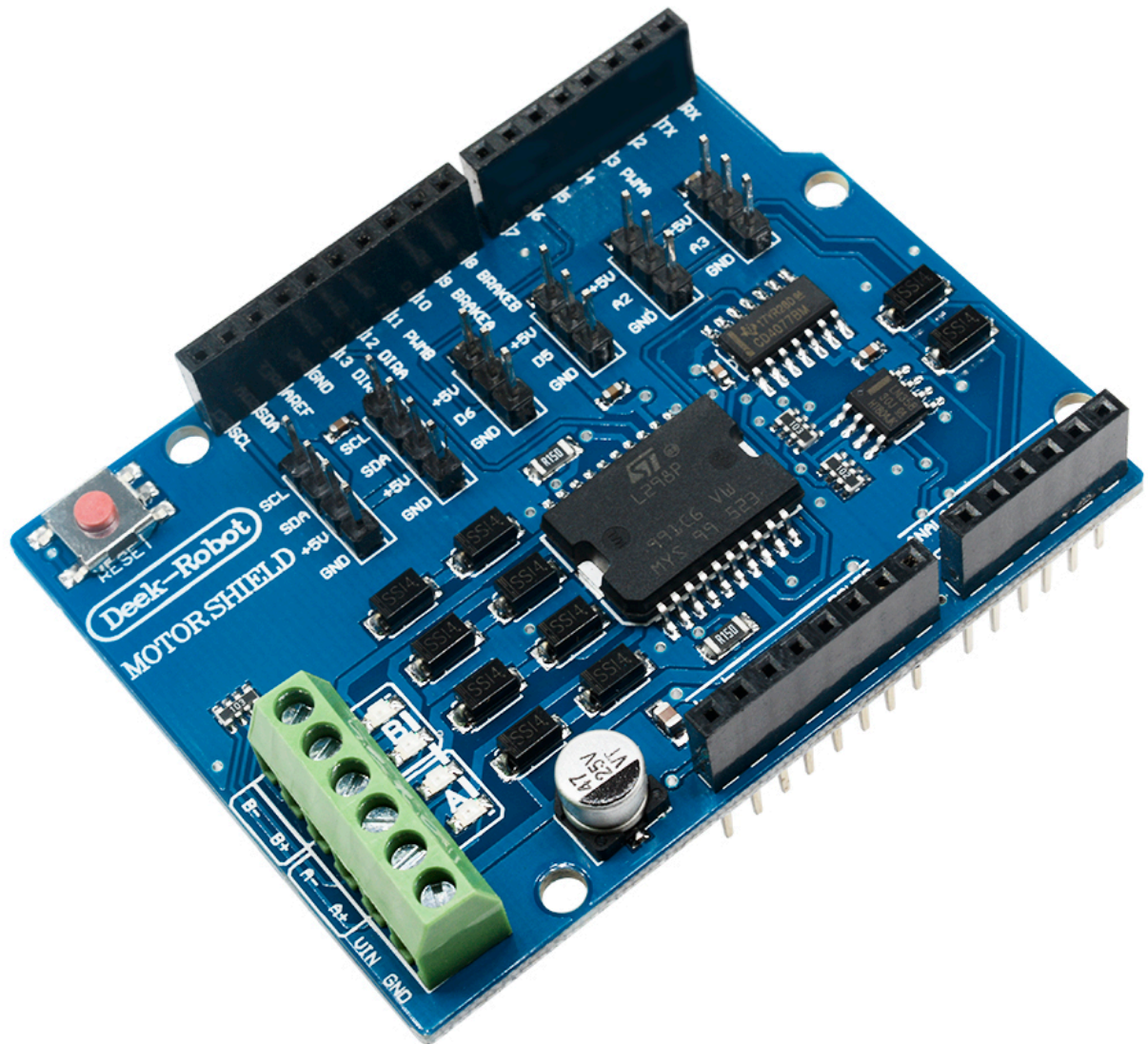










**Features:**

The Motor Shield is based on the L298 , which is a dual full-bridge driver designed to drive inductive loads such as relays, solenoids, DC and stepping motors. It lets you drive two DC motors with your board, controlling the speed and direction of each one independently. You can also measure the motor current absorption of each motor, among other features.

Operating Voltage 5V to 12V

Motor controller L298P, Drives 2 DC motors or 1 stepper motor

Max current 2A per channel or 4A max (with external power supply)

Current sensing 1.65V/A

Free running stop and brake function

Package Include:

1 x L298P Shield R3 DC Motor Driver Module 2A H-Bridge 2 way For Arduino UNO

