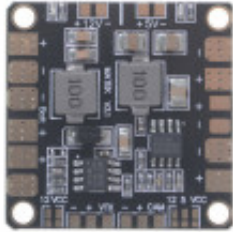


Matek Mini Power Hub Power Distribution Board

Produktkode: 722aa

Tilgjengelighet: 2

Custom Field 5 (Location): P25



Pris: kr. 90,00

Short Description

Matek Mini Power Hub Power Distribution Board PDB with BEC 5V & 12V for FPV & JO

Beskrivelse

Package including :

1x Power Distribution Board PDB

Matek Mini Power Hub Power Distribution Board PDB with BEC 5V & 12V for FPV QAV250 ZMR250 Multicopter Quadcopter

The Mini POWER HUB has been engineered to provide the highest possible performance and reliability in a 36*36mm & 4 layers PCB.

The HUB distributes power from a battery pack to 4 ESCs, as well as providing two synchronised & regulated DC outputs for powering cameras, servos, video transmitters, LEDs, etc. Batteries may range from 3S to 6S LiPo, and the BEC input is TVS protected. The HUB also features convenient solder bridge of various voltage for camera & video transmitter.

Features:

- 2oz copper & 4-layers PCB.
- ESC & Battery solder tabs in pairs
- Solder Bridges of various voltage for Camera & VTX.
- DC/DC synchronous buck regulator, Efficiency is up to 95%.
- TVS(Transient Voltage Suppressor) protection for DC/DC chip.
- 5V & 12V Output LED indicators & Short circuit tolerant

Specification:

General:

- Input voltage range (2S-6S operation): 7.2 - 26VDC
- Regulated 5V and 12V outputs
- LED power indicators (5V & 12V outputs)
- 4 ESC outputs

ESC outputs:

- Continuous current: 20A per output
- Peak current (10 seconds/minute): 30A per output

BEC 5V output:

- Designed for RC Receivers, Flight controllers, OSD, and Servos.
- Voltage: 5.0 +/- 0.1VDC
- Continuous current: 3 Amps
- Short-circuit tolerant (10 seconds/minute)
- LED (indicates voltage is in regulation, within 10%)

BEC 12V output:

- The battery should be 4S~6S LiPo
- Standard output designed to power cameras and video transmitters, etc.
- Voltage: 12.0 +/- 0.2VDC
- Continuous current: 2 Amps (Max. 3A 10s/minute)
- Short-circuit tolerant (10 seconds/minute)
- LED (indicates voltage is in regulation, within 10%)

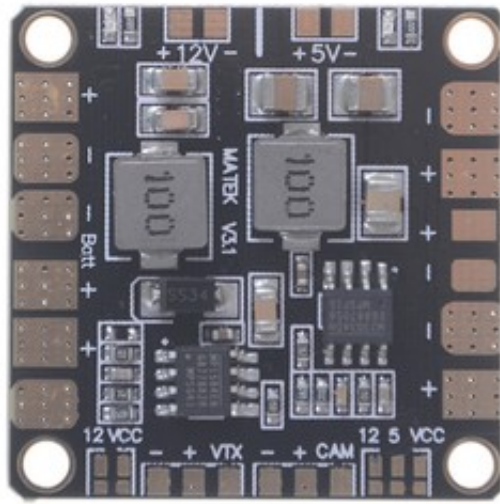
CAM & VTX voltage bridge

- 3S operation. choose VCC for 12V camera & 12V VTX, VCC=Battery Voltage.
- 4~6S operation, choose 12 for 12V camera & 12V VTX
- 3~6S operation, choose 5 for 5V camera
- Video pass through from the CAM pad to the VTX pad

Physical:

- Dimensions: 36 x 36mm
- Weight: 6g
- Mounting holes 30.5mm square spacing

100% Brand New !!!





Youtube

<https://youtu.be/zjl9T4D0UHs?si=yZSXGsvEc8JyAIM3>